

# **Environmental management for vegetation maintenance works**

**EGN 150**

**Version 5.0**

**8 Sep 2016**



## Document control

<b>Document status</b>	Final
<b>Document type</b>	Guidance
<b>Document suite</b>	Environment
<b>Release Authority</b>	James Hart
<b>Release date</b>	8 Sep 2016
<b>Review period</b>	3 years
<b>Review due by</b>	6 Sep 2019
<b>Security classification</b>	UNCLASSIFIED

## Document history

<b>Version</b>	<b>Summary of changes</b>	<b>Author</b>
1.0	Initial release for consultation.	James Hart
2.0	Updated to incorporate new layers on WebGIS EL and to incorporate feedback from WebGIS EL trial period.	Diana Charteris
3.0	Updated controls for all maintenance activities.	Michelle Quinn
4.0	Updated controls including additional controls to reflect VMCR requirements	Michelle Quinn
5.0	Addition of controls for NSW state forest or flora reserve, crown land, NSW declared wilderness areas, NSW marine parks, aquatic reserves, access tracks, raw mulch and OEH Protocol requirements.	Michelle Quinn

## Disclaimer

This document has been developed using information available from field and other sources and is suitable for most situations encountered in Ausgrid. Particular conditions, projects or localities may require special or different practices. It is the responsibility of the local manager, supervisor, assured quality contractor and the individuals involved to ensure that work practices are adequately managed in accordance with environmental legislative requirements.

Ausgrid disclaims any and all liability to any person or persons for any procedure, process or any other thing done or not done, as a result of this guideline.

This guideline is not authorised for external distribution and does not attempt to cover safety requirements.

This guideline shall remain the property of Ausgrid and may only be used for the purposes for which it was commissioned. Unauthorised use of this document in any form whatsoever is prohibited.

Contact: T (02) 9394 6659  
F (02) 9394 6662  
E: [environmentalservices@ausgrid.com.au](mailto:environmentalservices@ausgrid.com.au)

Ausgrid ABN 67 505 337 385

570 George Street  
Sydney NSW 2000

## Contents

<b>1</b>	<b>Introduction .....</b>	<b>6</b>
<b>2</b>	<b>Scope .....</b>	<b>6</b>
<b>3</b>	<b>Environmental requirements .....</b>	<b>6</b>
3.1	What are vegetation maintenance works? .....	7
3.2	What are sensitive areas? .....	8
<b>4</b>	<b>WebGIS Environmental Layers .....</b>	<b>9</b>
4.1	Data.....	9
4.2	Access and training.....	9
4.3	Process .....	9
<b>5</b>	<b>Specific environmental control measures.....</b>	<b>10</b>
5.1	Aboriginal heritage .....	10
5.2	Commonwealth, national, state, local and world heritage .....	10
5.3	S170 heritage .....	11
5.4	Critical habitat, NSW declared wilderness area, NSW state forest and flora reserves .....	11
5.5	Crown land .....	11
5.6	Biobanking agreement and RMS Biodiversity Offset .....	11
5.7	Threatened species, EEC, SEPP 14, SEPP 26, Ramsar wetlands, NSW marine parks or aquatic reserves .....	12
5.8	Overhead lines within spans 300m or greater .....	13
5.9	Marine vegetation (saltmarsh, mangroves, seagrass beds) or waterways .....	13
5.10	National Parks estate .....	14
5.11	Access tracks .....	15
5.12	Sensitive environmental features .....	15
<b>Appendix A</b>	<b>REF conditions of approval .....</b>	<b>16</b>

## Glossary

Term	Meaning
<b>AGVET Code</b>	Agricultural and Veterinary Chemicals Code
<b>CRA</b>	conservation risk assessment
<b>disturbing the ground surface</b>	Any works that involve the disturbance of soil or rock, excavation, trenching, auguring or filling.
<b>EEC</b>	endangered ecological community
<b>emergency works</b>	<p>Works for the purpose of maintaining or restoring infrastructure facilities or equipment in order to ensure public safety or to protect buildings or the environment due to:</p> <ul style="list-style-type: none"> <li>• a sudden natural event, including a storm, flood, tree fall, bush fire, land slip or coastal inundation, or</li> <li>• accident, equipment failure or structural collapse, or</li> <li>• damage caused by vandalism or arson,</li> </ul> <p>provided the works involve no greater disturbance to soil or vegetation than necessary and are carried out in accordance with all applicable requirements of the 'Blue Book'.</p>
<b>EP&amp;A Act</b>	<i>Environmental Planning and Assessment Act 1979</i> (NSW)
<b>EPA</b>	Environment Protection Authority
<b>EPBC Act</b>	<i>Environment Protection and Biodiversity Conservation Act 1999</i> (Commonwealth)
<b>ISSC</b>	Industry Safety Steering Committee
<b>NPW Act</b>	<i>National Parks and Wildlife Act 1974</i>
<b>NPWS</b>	National Parks and Wildlife Service (part of OEH)
<b>NS174C</b>	Ausgrid's Network Standard, <a href="#">NS174C Environmental Handbook for Construction and Maintenance</a>
<b>OEH</b>	Office of the Environment and Heritage
<b>Ramsar wetland</b>	A 'declared Ramsar wetland' is an area that has been designated under Article 2 of the Convention on Wetlands (Ramsar, Iran, 1971) or declared by the Minister to be a declared Ramsar wetland under the EPBC Act.
<b>REF</b>	review of environmental factors
<b>RFS</b>	Rural Fire Service
<b>RMS</b>	Roads and Maritime Services
<b>ROL</b>	road occupancy licence
<b>S170 register</b>	A register of heritage assets owned, occupied or controlled by a State agency, prepared in accordance with section 170 of the <i>Heritage Act 1977</i> .
<b>SEF</b>	sensitive environmental features
<b>sensitive areas</b>	Sensitive areas are areas that contain environmental features which are legally protected (refer to section 0).
<b>SEPP</b>	state environmental planning policy
<b>TCP</b>	traffic control plan
<b>TMP</b>	traffic management plan
<b>undisturbed land</b>	Land that has not been the subject of human activity that has changed the land's surface, being changes that remain clear and observable.
<b>VMCR</b>	Vegetation Management, Common Requirements

Term	Meaning
<b>Vegetation maintenance works</b>	As listed in clause 43k of <a href="#">State Environmental Planning Policy (SEPP) (Infrastructure) 2007</a> and include: <i>“vegetation management complying with a tree management plan prepared in accordance with clause 103 of the Electricity Supply (General) Regulation 2001 or vegetation management that is exempted under clause 21 of the Native Vegetation Regulation 2005.”</i>
<b>WebGIS Environmental layers</b>	Environmental Geographic Information System using Ausgrid’s WebGIS with environmental layers for key sensitive areas.
<b>WIRES</b>	Wildlife Information, Rescue and Education Service Incorporated

# 1 Introduction

**Vegetation maintenance works** must be undertaken in a way which minimises unintentional impacts and maintain the safe and reliable operation of the network with no more than minimal impact on the environment.

Routine vegetation maintenance must be undertaken in accordance with *Review of Environmental Factors Routine Vegetation Maintenance Works* (REF - 284). There are a number of conditions of approval associated with routine vegetation maintenance. The REF conditions are outlined in Appendix A.

This procedure covers the environmental management requirements for vegetation maintenance activities.

# 2 Scope

This document applies to Ausgrid workers (employees, contractors) undertaking **vegetation maintenance works** on behalf of Ausgrid.

Vegetation works which are not **vegetation maintenance works**, such as those associated with new powerlines, require an environmental assessment in accordance with the [Environmental Planning and Assessment Act 1979 \(EP&A Act\)](#). This process is described on Ausgrid's [Environmental Planning website](#).

All works must comply with Ausgrid's [NS174C Environmental Handbook](#), which outlines responsibilities, key requirements and minimum environmental controls for all construction and maintenance work on Ausgrid's network.

# 3 Environmental requirements

Environmental management requirements for **vegetation maintenance works** will depend on the:

- location of the works, and
- type of activities being undertaken.

The process for determining requirements is shown in Figure 3-1.

Environmental management controls for **vegetation maintenance works** which are not in a sensitive area:

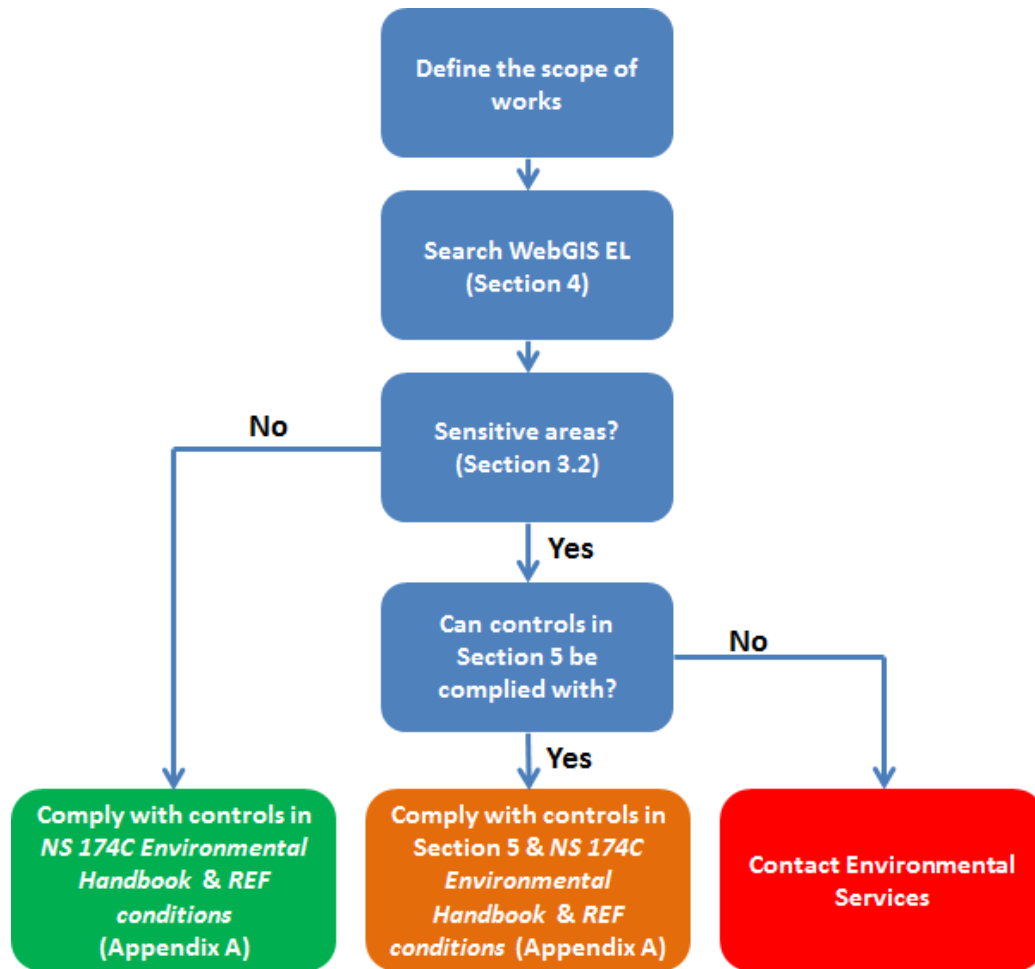
- Ausgrid's [NS174C Environmental Handbook](#), and
- REF conditions (Appendix A).

Environmental management controls for **vegetation maintenance works** in **sensitive areas**:

- specific control measures in Section 5,
- Ausgrid's [NS174C Environmental Handbook](#), and
- REF conditions (Appendix A).

Works which cannot comply with these control measures will require additional investigation prior to the commencement of work.

Figure 3-1 Determining environmental management requirements



### 3.1 What are vegetation maintenance works?

**Vegetation maintenance works** that are considered to be exempt development are listed in clause 43k of [State Environmental Planning Policy \(SEPP\) \(Infrastructure\) 2007](#) and include:

*“vegetation management complying with a tree management plan prepared in accordance with clause 103 of the Electricity Supply (General) Regulation 2001 or vegetation management that is exempted under clause 21 of the Native Vegetation Regulation 2005.”*

## 3.2 What are sensitive areas?

**Sensitive areas** are areas that contain environmental features which are legally protected and examples include:

- Aboriginal heritage
- Biobanking agreement and RMS Biodiversity Offset
- Commonwealth, national, state, local and world heritage
- Critical habitat
- Crown Land
- Endangered ecological Communities (EEC)
- Marine vegetation (saltmarsh, mangroves, seagrass beds) or waterways
- NSW National Parks Estate
- NSW declared wilderness area,
- NSW state forest and flora reserves
- Other areas as defined in the sensitive environmental features (SEF) layer
- Overhead lines within spans 300m or greater
- Ramsar wetlands
- S170 heritage
- SEPP 14 – Coastal Wetlands
- SEPP 26 – Littoral Rainforests
- Threatened species



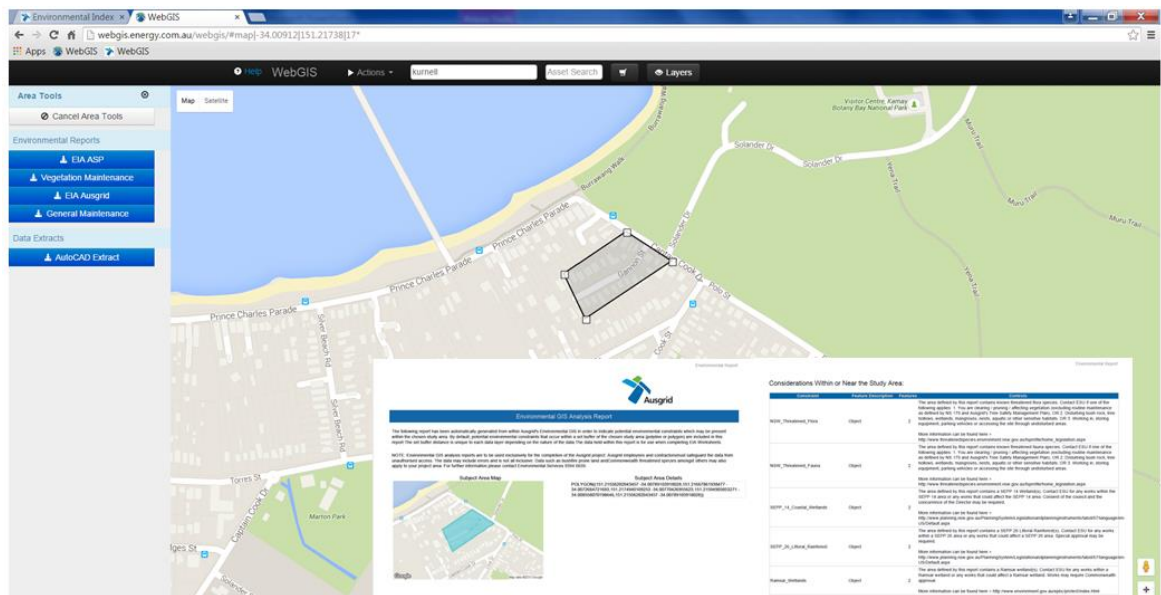
## 4 WebGIS Environmental Layers

### 4.1 Data

Ausgrid's environmental geographic information system, called WebGIS Environmental Layers, contains data for the **sensitive areas** listed in section 0.

WebGIS Environmental Layers allows authorised users to view the data on screen or draw a polygon and generate a maintenance report (refer to Figure 4-1 for an example). The data and maintenance report options available will depend on the type of work being undertaken and the user's authorisation.

Figure 4-1 WebGIS and maintenance report



### 4.2 Access and training

Access to Ausgrid's WebGIS Environmental Layers is restricted. To obtain access:

STEP 1: Email a business reason for the request to Environmental Services on [environmentalservices@ausgrid.com.au](mailto:environmentalservices@ausgrid.com.au). Contractors will be issued a user agreement to sign and return.

STEP 2: Complete the online training course [ET 045 WebGIS Environmental Layers](#).

### 4.3 Process

STEP 1: Search the work location by drawing a polygon using the WebGIS Environmental Layers and generate the appropriate report for the works.

STEP 2: For **vegetation maintenance works** in **sensitive areas** follow the relevant control measures outlined in section 5 in addition to standard controls in Ausgrid's [NS174C Environmental Handbook](#).

STEP 3: For **vegetation maintenance works** which are **not** in **sensitive areas** follow the standard controls in Ausgrid's [NS174C Environmental Handbook](#).

## 5 Specific environmental control measures

### 5.1 Aboriginal heritage

For **vegetation maintenance works** within the buffer of Aboriginal heritage objects, comply with these control measures:

- **IMPORTANT:** There are known Aboriginal object (s) in the area. All workers to be made aware of the presence of Aboriginal heritage in the area and the need to avoid impacts. If in doubt, contact Ausgrid's Environmental Services on 9394 6659.
- No disturbance of the ground surface including rock outcrops and ground cover.
- Restrict vehicle and plant movements to existing roadways or access tracks.
- Use plant and equipment that have only rubber tyres.
- No importing mulch from other sites.
- No impacts to native vegetation unless all of the following apply:
  - works are for the purposes of vegetation maintenance
  - works are undertaken in accordance with [ISSC 3 Guideline for Management Vegetation Near Power Lines](#), [Vegetation Management Common Requirement \(VMCR\)](#) and [Ausgrid's Tree Safety Management Plan](#)
  - clearing is restricted to the minimum extent necessary to maintain existing and regularly maintained clearances (ie no new clearance envelopes).
- All works to cease if potential heritage is discovered. Access should be restricted and Supervisor notified to ensure the regulator is contacted. Ausgrid employees should contact Ausgrid's Environmental Services on 9394 6659.

For any **vegetation maintenance works** which will not meet the above requirements, contact Ausgrid's Environmental Services on [environmentalservices@ausgrid.com.au](mailto:environmentalservices@ausgrid.com.au) or 9394 6659.

For a copy of the VMCR, contractors can contact their Ausgrid Contract Manager.

### 5.2 Commonwealth, national, state, local and world heritage

For **vegetation maintenance works** within the buffer of Commonwealth, national, state, local and world heritage objects which are not Ausgrid assets, comply with these control measures:

- All workers to be made aware of the presence of non Aboriginal heritage in the area and the need to avoid impacts.
- No physical alterations to heritage items.
- No works within the property boundary of state heritage items.
- No more than minor or inconsequential impacts to local heritage items or potential heritage items eg sandstone gutters, sandstone walls.
- No excavations within an archaeological area.
- No importing mulch from other sites.
- All works to cease if potential heritage is discovered. Access should be restricted and Supervisor notified to ensure the regulator is contacted. Ausgrid employees should contact Ausgrid Environmental Services on 9394 6659.

For any **vegetation maintenance works** which will not meet the above requirements or to obtain copies of exemptions, conservation management plans and heritage maintenance requirements, contact Ausgrid's Environmental Services on [environmentalservices@ausgrid.com.au](mailto:environmentalservices@ausgrid.com.au) or 9394 6659.

### 5.3 S170 heritage

For **vegetation maintenance works** within the buffer of Ausgrid's s170 register heritage items, comply with these control measures:

- All workers must be made aware of the presence of and potential for heritage objects in the area.
- No physical alterations to a heritage item unless complying with Ausgrid's heritage exemptions (for local heritage), *EG 261 Conservation for heritage distribution substations* (for Ausgrid employees) or Ausgrid's Conservation Management Plans (for State heritage).

For any **vegetation maintenance works** which will not meet the above requirements or to obtain copies of exemptions, EG 261, conservation management plans and heritage maintenance requirements, contact Ausgrid's Environmental Services on [environmentalservices@ausgrid.com.au](mailto:environmentalservices@ausgrid.com.au) or 9394 6659.

### 5.4 Critical habitat, NSW declared wilderness area, NSW state forest and flora reserves

For any **vegetation maintenance works** within critical habitat, NSW declared wilderness areas, NSW state forests or flora reserves, contact Ausgrid's Environmental Services on [environmentalservices@ausgrid.com.au](mailto:environmentalservices@ausgrid.com.au) or 9394 6659.

### 5.5 Crown land

For **vegetation maintenance works** within Crown land, comply with these control measures:

- Restrict work to maintain, repair or replace an existing asset within an existing developed footprint.
- Keep access on existing access tracks for the purpose of undertaking infrastructure activities.
- No importing mulch from other sites.

For any **vegetation maintenance works** which will not meet the above requirements, contact Ausgrid's Environmental Services on [environmentalservices@ausgrid.com.au](mailto:environmentalservices@ausgrid.com.au) or 9394 6659.

### 5.6 Biobanking agreement and RMS Biodiversity Offset

For **vegetation maintenance works** within biobank and RMS biodiversity offset sites, comply with these control measures:

- Restrict works to within Ausgrid's easement.
- Restrict works to development for the purpose of an electricity transmission or distribution network that remove or reduce an imminent risk of serious personal injury or damage to property or bushfire hazard reduction works.

- Keep access on existing fire trails and walking tracks for the purpose of undertaking infrastructure activities.
- Avoid impacts to vegetation unless all of the following apply:
  - works are for the purposes of vegetation maintenance
  - works are undertaken in accordance with *ISSC 3 Guideline for Management Vegetation Near Power Lines, Vegetation Management Common Requirement (VMCR)* and *Ausgrid's Tree Safety Management Plan*
  - clearing is restricted to the minimum extent necessary to maintain existing and regularly maintained clearances (ie no new clearance envelopes).
- No importing mulch from other sites.

For any **vegetation maintenance works** which will not meet the above requirements, contact Ausgrid's Environmental Services on [environmentalservices@ausgrid.com.au](mailto:environmentalservices@ausgrid.com.au) or 9394 6659.

For a copy of the VMCR, contractors contact their Ausgrid Contract Manager.

## 5.7 Threatened species, EEC, SEPP 14, SEPP 26, Ramsar wetlands, NSW marine parks or aquatic reserves

For **vegetation maintenance works** where there are threatened species, endangered ecological communities (EEC), SEPP 14 – Coastal Wetlands, SEPP 26 – Littoral Rainforests, Ramsar wetlands, NSW marine parks or aquatic reserves, comply with these control measures:

- All workers to be made aware of sensitive ecology in the area and the need to avoid impacts.
- No works in undisturbed areas (including storing equipment in, parking vehicles in or accessing the site).
- No disturbance of bush rock, tree hollows, wetlands, mangroves, nests, aquatic or other sensitive habitats.
- Retain ground cover vegetation
- Restrict vehicle and plant movements to existing roadways or access tracks
- No importing mulch from other sites.
- No disturbance of native vegetation unless:
  - works are for the purpose of vegetation maintenance
  - works are undertaken in accordance with *ISSC 3 Guideline for Management Vegetation Near Power Lines, Vegetation Management Common Requirement (VMCR)* and *Ausgrid's Tree Safety Management Plan*
  - clearing is to the minimum extent necessary to maintain existing and regularly maintained clearances (ie no new clearance envelopes).

For any **vegetation maintenance works** which will not meet the above requirements, contact Ausgrid's Environmental Services on [environmentalservices@ausgrid.com.au](mailto:environmentalservices@ausgrid.com.au) or 9394 6659.

For a copy of the VMCR, contractors can contact their Ausgrid Contract Manager.

## 5.8 Overhead lines within spans 300m or greater

For **vegetation maintenance works** where there are overhead lines with spans 300m or greater, comply with these control measures:

- No disturbance of native vegetation unless:
  - works are for the purpose of vegetation maintenance
  - works are undertaken in accordance with [ISSC 3 Guideline for Management Vegetation Near Power Lines](#), [Vegetation Management Common Requirement \(VMCR\)](#) and [Ausgrid's Tree Safety Management Plan](#)
  - clearing is to the minimum extent necessary to maintain existing and regularly maintained clearances (ie no new clearance envelopes).

**Note:** Overhead spans 300m or greater may require vegetation clearing beyond historical clearances to meet the requirements of the VMCR.

For any **vegetation maintenance works** which will not meet the above requirements, contact Ausgrid's Environmental Services on [environmentalservices@ausgrid.com.au](mailto:environmentalservices@ausgrid.com.au) or 9394 6659.

For a copy of the VMCR, contractors can contact their Ausgrid Contract Manager.

## 5.9 Marine vegetation (saltmarsh, mangroves, seagrass beds) or waterways

For **vegetation maintenance works** within the buffer of marine vegetation (saltmarsh, mangroves, seagrass beds), comply with these control measures:

- All workers to be made aware of the presence of sea grass, mangroves and waterways in the area and the need to avoid impacts.
- No disturbance of creeks or waterways.
- No disturbance of seagrass, saltmarsh, creeks or waterways
- No works in undisturbed areas (including storing equipment in, parking vehicles in or accessing the site).
- No importing mulch from other sites.
- No disturbance of native vegetation unless:
  - mangrove trimming works for power line corridor maintenance in accordance with Ausgrid's permit under Part 7 of the *Fisheries Management Act 1994*
  - works are for the purpose of vegetation maintenance
  - works are undertaken in accordance with [ISSC 3 Guideline for Management Vegetation Near Power Lines](#), [Vegetation Management Common Requirement \(VMCR\)](#) and [Ausgrid's Tree Safety Management Plan](#)
  - clearing is to the minimum extent necessary to maintain existing and regularly maintained clearances (ie no new clearance envelopes).

For any **vegetation maintenance works** which will not meet the above requirements, assistance in specifically delineating marine vegetation or for a copy of or assistance in complying with Ausgrid's Part 7 permit, contact Ausgrid's Environmental Services on [environmentalservices@ausgrid.com.au](mailto:environmentalservices@ausgrid.com.au) or 9394 6659.

For a copy of the VMCR, contractors can contact their Ausgrid Contract Manager.

## 5.10 National Parks estate

Comply with the following control measures for **vegetation maintenance works** within land reserved under the *National Parks and Wildlife Act 1974* (eg Aboriginal areas, National Parks, nature reserves, regional parks, historic sites and state conservation areas), comply with these control measures:

- Notify National Parks and Wildlife Services (NPWS) by submitting a notification form prior to inspection and maintenance works:
  - maintenance works – 2 weeks prior notice
  - inspections works – 4 business days prior notice
  - emergency works – as soon as possible.
- Comply with any direction given by NPWS.
- Prepare and comply with the conservation risk assessment (CRA) for maintenance works, where relevant.
- Avoid impacts to vegetation unless all of the following apply:
  - works are for the purposes of vegetation maintenance
  - works are undertaken in accordance with [ISSC 3 Guideline for Management Vegetation Near Power Lines](#), [Vegetation Management Common Requirement \(VMCR\)](#) and [Ausgrid's Tree Safety Management Plan](#)
  - clearing is restricted to the minimum extent necessary to maintain existing and regularly maintained clearances (ie no new clearance envelopes)
  - asset protection zone works around substations are within a NPWS approved asset protection zone.
- Where access track maintenance is within the scope of works comply with [OEH Erosion and Sediment Control on Unsealed Roads, A Field Guide for Erosion and Sediment Control Maintenance Practices on Unsealed Roads](#).
- No importing mulch and gravel / soil from other sites.
- All vehicle / plant access must be limited to disturbed land.
- Worksite area must be clearly defined using an appropriate method such as marking tape or safety cones.
- Works must not be undertaken in wet weather if the proposed track surfaces and sites are going to be damaged by vehicles, equipment or works. Appropriate controls must be installed in wet or low lying areas that must be accessed.
- Restrict maintenance and inspection activities to minimise impact on soil and damage to tracks that could exacerbate erosion. Abide by any reasonable instructions or directions from OEH regarding access to weather-affected tracks.
- Any areas including vehicular tracks which are damaged or disturbed in such a way that may lead to soil erosion must be stabilised immediately and rehabilitation undertaken within 7 days following direction from NPWS staff.
- All works must be undertaken in a manner to minimise disturbance.
- Follow Ausgrid's [NS174C Environmental Handbook](#) for minimising the risk of vehicles and equipment spreading weeds and pathogens to NPW lands.
- A copy of the notification form (and CRA where relevant) must be on site at all times.
- Except for activities approved by a Rural Fire Service exemption, do not light or maintain any fire during Total Fire Bans.



- Should any incidents that pose a risk to public safety or the environment occur the local ranger must be notified as soon as practicable. Written details must be provided within 7 days of the incident.
- Minimise disturbance to ground and understorey cover. If the activity results in disturbance to ground and understorey cover, rehabilitate the area to the same state that it was in prior to the disturbance.
- Leave cut vegetation in a manner that does not pose a fire risk or impair the environmental or aesthetic values of a park. Alternatively, it may be mulched or be removed from a park, as required by OEH.
- If notification has been provided more than 6 weeks in advance of the works a follow up phone call to the ranger is required advising of exact start date.

For any **vegetation maintenance works** which will not meet the above requirements or to determine whether a CRA is relevant, contact Ausgrid's Environmental Services on [environmentalservices@ausgrid.com.au](mailto:environmentalservices@ausgrid.com.au) or 9394 6659.

### 5.11 Access tracks

For **vegetation maintenance works** where there are access tracks, comply with these control measures:

- Restrict vehicle and plant movements to existing roadways or access tracks
- No works in undisturbed areas (including storing equipment in, parking vehicles in or accessing the site)
- No new works other than routine repairs and maintenance

For any **vegetation maintenance works** which will not meet the above requirements, contact Ausgrid's Environmental Services on [environmentalservices@ausgrid.com.au](mailto:environmentalservices@ausgrid.com.au) or 9394 6659.

### 5.12 Sensitive environmental features

Ausgrid's WebGIS Environmental Layers contains a sensitive environmental features (SEF) layer that contains information on items not contained in the above layers. Information could include contamination, myrtle rust occurrence, ecologically significant sites and sites where previous environmental incidents have occurred.

Refer to the SEF layer section of the maintenance report for specific requirements.

## Appendix A REF conditions of approval

#	Condition
5.1.1	Comply with section 1.6 of NS174C Environmental Handbook.
5.1.2	Provide 7 to 21 days' notice to property owners where access to private property is required.
5.2.1	Comply with section 2.2 of NS174C Environmental Handbook.
5.2.2	All plant and equipment would be turned off when not in use.
5.3.1	Comply with section 2.4 of NS174C Environmental Handbook.
5.3.2	<p>Works would be undertaken between 7am and 6pm Monday to Friday and 8am and 1pm on Saturday. Between 7am and 8am on Saturdays, works that are inaudible to the nearest residential premises are allowed. Audible works may be undertaken outside of these hours if:</p> <ul style="list-style-type: none"> <li>the works are emergency works AND the affected residents have been notified as far as reasonably practicable; OR</li> <li>the works fall into one of the following categories AND the affected residents are provided with a notification letter at least 4 clear business days prior to the works: <ul style="list-style-type: none"> <li>the delivery of oversized plant or structures that cannot be undertaken during standard hours</li> <li>maintenance and repair of essential public infrastructure that is unable to occur during standard hours</li> <li>public infrastructure works that shorten the length of the work and are supported by the affected community (this would require community consultation).</li> </ul> </li> </ul>
5.3.3	Have a documented complaints process, including an escalation procedure so that if a complainant is not satisfied there is a clear path to follow.
5.3.4	Keep a register of any complaints, including details of the complaint such as date, time, person receiving complaint, complainant's contact number, person referred to, description of the complaint, time of verbal response and timeframe for written response where appropriate.
5.4.1	Check vehicles and equipment are serviced regularly and operate efficiently. It is an offence for vehicles to emit smoke for a continuous period of more than ten seconds.
5.4.2	Position vehicles and equipment where the fumes will least affect receivers.
5.4.3	Do not leave vehicles or equipment idling when they are not needed.
5.4.4	Restrict traffic movement and vehicle speeds over disturbed areas and unsealed roads.
5.5.1	Comply with sections 2.1 and 2.3 of NS174C Environmental Handbook.
5.5.2	No machinery vegetation maintenance is to occur within 5-10 m of waterways or in steep gullies. Clearing here would be restricted to hand clearing.
5.6.1	Undertake access track maintenance in accordance with <i>Managing Urban Stormwater Volume 2C Unsealed Roads</i> and <i>Erosion and sediment control on unsealed roads – A field guide for erosion and sediment control maintenance practices</i> .
5.6.2	No machinery vegetation maintenance is to occur within 5-10 m of waterways or in steep gullies. Clearing here would be restricted to hand clearing.
5.6.3	Follow any instructions from the NPWS regarding access to weather-affected access tracks.
5.6.4	Restrict maintenance and inspection activities in land reserved under the NPW Act to periods of dry weather and to daylight hours.
5.6.5	Keep vehicle speeds to a minimum and restrict vehicle movements to defined access tracks where possible.
5.6.6	Use approved tyred/tracked vehicles at all times to minimise the impacts on the ground surface.
5.7.1	Comply with section 4.3 of NS174C Environmental Handbook.
5.7.2	If unexpected contamination is identified during construction (e.g. suspicious odour or appearance), the works would cease, access restricted and Environmental Services would be contacted.



#	Condition
5.7.3	If dumped rubbish is identified during the proposal that is suspected of containing asbestos-containing materials, follow Ausgrid's asbestos procedures. Report the rubbish to OEH. Do not attempt to remove the asbestos-containing rubbish as there may be other health risks associated with the rubbish pile that have not been identified or considered.
5.8.1	Comply with sections 3.3 and 4.2 of NS174C Environmental Handbook.
5.9.1	Comply with sections 3.3 and 5 of NS174C Environmental Handbook.
5.9.2	<p>Prior to commencing works, search the work location and undertake an assessment using Ausgrid's Environmental Layers Web Geographic Information System (GIS).</p> <p>If a sensitive area is identified, comply with the relevant mitigation measures. In the case of threatened species, EEC, SEPP 14, SEPP 26 and Ramsar wetlands, these include:</p> <ul style="list-style-type: none"> <li>• ensure all workers are aware of the presence of the relevant sensitive area in relation to the works</li> <li>• workers must be instructed to: <ul style="list-style-type: none"> <li>• retain ground cover vegetation</li> <li>• prevent impacts to undisturbed areas, bush rock, tree hollows, wetlands, mangroves, nests or seagrass</li> <li>• restrict vehicle and plant movements to existing roadways or access tracks</li> </ul> </li> </ul> <p>In the case of critical habitat these include:</p> <ul style="list-style-type: none"> <li>• no works are allowed within critical habitat without referral to Ausgrid's Environmental Services</li> <li>• all workers must be made aware of the presence of critical habitat and the need to avoid works within it.</li> </ul>
5.9.3	Prior to commencing inspection and maintenance works in National Parks, undertake notification to NPWS according to Ausgrid's procedures for inspection and maintenance of Ausgrid's network assets and associated infrastructure.
5.9.4	All works within the Ku-ring-gai biobank site is to be undertaken in accordance with Ministerial consent.
5.9.5	<p>In biobank sites:</p> <ul style="list-style-type: none"> <li>• Restrict works to within Ausgrid's easement.</li> <li>• Restrict works to development for the purpose of an electricity transmission or distribution network that remove or reduce an imminent risk of serious personal injury or damage to property or bushfire hazard reduction works.</li> <li>• Keep access on existing fire trails and walking tracks for the purpose of undertaking infrastructure activities.</li> <li>• Avoid impacts to vegetation unless all of the following apply: <ul style="list-style-type: none"> <li>• works are for the purposes of vegetation maintenance</li> <li>• works are undertaken in accordance with <a href="#">ISSC 3 Guideline for Management Vegetation Near Power Lines</a> and <a href="#">Ausgrid's Tree Safety Management Plan</a></li> <li>• clearing is restricted to the minimum extent necessary to maintain existing and regularly maintained clearances (ie no new clearance envelopes).</li> </ul> </li> <li>• No importing mulch from other sites.</li> </ul>
5.9.6	<p>Additional vegetation clearances may be required for spans 300m or greater.</p> <p>No works involving additional vegetation clearances are allowed without referral to Ausgrid's Environmental Services. Additional assessment and mitigation measures will be addressed on a site by site basis.</p>
5.9.7	Remove noxious weeds by hand and kept separate from native vegetative waste. Do not mulch and re-spread weeds on site.
5.9.8	No importing mulch from other sites.
5.9.9	Contain and dispose of cleared vegetation containing weeds to an appropriately licensed vegetation waste disposal facility.

#	Condition
5.9.10	<p>When using pesticides:</p> <ul style="list-style-type: none"> <li>• use Ausgrid approved pesticides</li> <li>• use the right equipment and pesticide for the job</li> <li>• use well maintained equipment that is in good working order</li> <li>• mix only what you need for the job</li> <li>• handle, store, mix, use and dispose of pesticides in accordance with the label or permit</li> <li>• ensure spray does not drift outside the target area</li> <li>• avoid spraying during periods of rain or wind</li> <li>• provide an adequate buffer area between the application and dwellings, waterways, animals or environmentally sensitive areas.</li> <li>• display approved notification signage when pesticides are used in public places in accordance with Ausgrid's Pesticide Use Notification Plan</li> <li>• have the SDS available during use for employees or members of the public</li> <li>• notify owners and occupiers of private property at least 48 hours prior to use on their property.</li> </ul>
5.9.11	<p>When storing pesticides:</p> <ul style="list-style-type: none"> <li>• store pesticides in a container with an Agricultural and Veterinary Chemicals (AGVET) Code approved label</li> <li>• store in areas that are bunded, secure, cool and well ventilated.</li> </ul>
5.9.12	<p>When transporting pesticides:</p> <ul style="list-style-type: none"> <li>• transport only enough pesticide as is reasonably required for the job</li> <li>• carry an appropriate spill kit in all vehicles used to transport pesticides.</li> </ul>
5.9.13	<p>When undertaking the commercial use of pesticides, the user must:</p> <ul style="list-style-type: none"> <li>• have current EPA approved qualifications</li> <li>• keep records in accordance with EPA requirements, such as making records within 24 hours and keeping records for a period of three years.</li> </ul>
5.9.14	<p>Before entering or leaving the site, clean vehicles, clearing equipment and general construction equipment so they are free of soil, seeds and plant material to prevent the spread of exotic plant species and pathogens.</p>
5.9.15	<p>Before entering or leaving bushland, wash/disinfect boots, vehicles and equipment.</p>
5.9.16	<p>Keep to designated roads and access tracks.</p>
5.9.17	<p>Implement a tree felling protocol to protect fauna.</p> <ol style="list-style-type: none"> <li>1. Identify all hollow-bearing trees in the vicinity of the works with high visibility flag or similar prior to commencement of vegetation clearing.</li> <li>2. Undertake pre-clearance surveys for fauna immediately prior to clearing. Where fauna is identified in a tree to be felled, the tree must not be cleared until the fauna has relocated itself.</li> <li>3. Remove understorey vegetation and other trees in the vicinity.</li> <li>4. Check the tree each morning until the fauna moves into adjacent vegetation (normally following day).</li> <li>5. Ensure an ecologist or a wildlife rescue organisation representative is present during felling of hollow-bearing trees to relocate fauna or provide care as necessary.</li> </ol>
5.9.18	<p>For the relocation or care of native animals in Newcastle and the Lower Hunter, contact the Native Animal Trust Fund - 0418 628 483.</p>
5.9.19	<p>For the relocation or care of native animals in the Upper Hunter, contact the Wildlife Aid - 0447 667 737</p>
5.9.20	<p>For the relocation or care of native animals in Sydney and the Central Coast, contact WIRES - 1300 094 737</p>
5.10.1	<p>Comply with section 5.3 of NS174C Environmental Handbook.</p>

#	Condition
5.10.2	Vegetation clearing to comply with Ausgrid's NEG OH21 Vegetation Safety Clearances / ISSC3 Guideline for Managing Vegetation Near Powerlines/ Vegetation Management, Common Requirements, Ausgrid, Endeavour Energy, Essential Energy (VMCR).
5.10.3	During a total fire ban, no open fires or hot works are to be undertaken unless in accordance with an exemption granted by the NSW RFS.
5.11.1	Comply with section 6.1 of NS174C Environmental Handbook.
5.11.2	<p>Prior to commencing works, search the work location and undertake an assessment using Ausgrid's Environmental Layers Web GIS.</p> <p>If a sensitive area is identified, comply with the relevant mitigation measures. In the case of Aboriginal heritage, these include:</p> <ul style="list-style-type: none"> <li>• ensure all workers are aware of the potential for Aboriginal heritage objects in the area</li> <li>• workers must be instructed to: <ul style="list-style-type: none"> <li>• avoid disturbing the ground surface</li> <li>• prevent impacts to rock outcrops</li> <li>• retain ground cover vegetation</li> <li>• restrict vehicle and plant movements to existing roadways or access tracks</li> <li>• install a temporary barrier near known Aboriginal heritage objects and places to restrict access, where relevant.</li> </ul> </li> </ul>
5.11.3	If potential Aboriginal heritage is identified during works, cease works, restrict access and contact Ausgrid's Environmental Services to investigate.
5.12.1	Comply with section 6.2 of NS174C Environmental Handbook.
5.12.2	<p>Prior to commencing works, search the work location and undertake an assessment using Ausgrid's Environmental Layers Web GIS.</p> <p>If a sensitive area is identified, comply with the relevant mitigation measures. In the case of non-Aboriginal heritage, these include:</p> <ul style="list-style-type: none"> <li>• ensure all workers are aware of the potential for non-Aboriginal heritage objects in the area</li> <li>• workers must be instructed to: <ul style="list-style-type: none"> <li>• restrict vehicle and plant movements to existing roadways or access tracks</li> <li>• install a temporary barrier near known non-Aboriginal heritage objects and places to restrict access, where relevant.</li> </ul> </li> </ul>
5.12.3	If potential heritage is identified during works, cease works, restrict access and contact the Environmental Officer to investigate.
5.13.1	Comply with section 1.6 of NS174C Environmental Handbook.
5.14.1	Comply with section 2.5 of NS174C Environmental Handbook.
5.14.2	<p>Prior to works being undertaken, apply for section 138 consent from:</p> <ul style="list-style-type: none"> <li>• RMS for classified state roads</li> <li>• the relevant local council for classified regional roads.</li> </ul>
5.14.3	<p>Prior to works being undertaken, obtain an ROL for :</p> <ul style="list-style-type: none"> <li>• all classified state roads, classified regional roads and local roads within 100m of a traffic signal in the Sydney region</li> <li>• all classified state roads in the Hunter region.</li> </ul>
5.14.4	Where relevant, prior to works being undertaken, prepare a TMP in accordance with the RMS Manual <i>Traffic Control at Work Sites</i> .
5.14.5	Where relevant, prior to works being undertaken, prepare a TCP in accordance with AS 1742.3
5.14.6	The TMP and /or TCP must consider the cumulative impact of construction traffic movements from other Ausgrid and non-Ausgrid works.
5.15.1	Appropriate signage would be displayed providing the contractors name and contact number / email address and an Ausgrid contact number to the community to lodge any concerns.