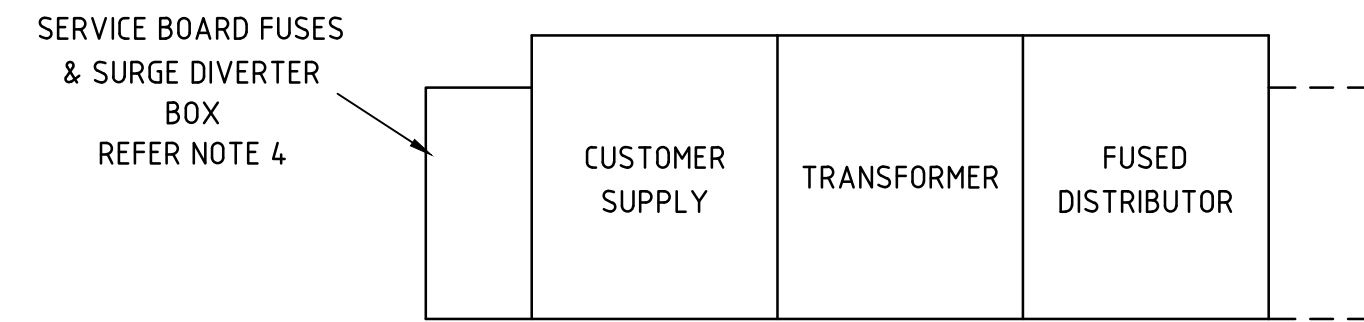
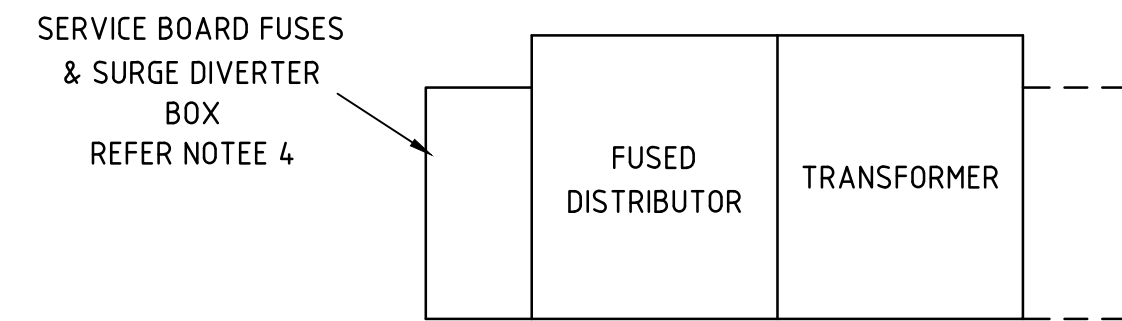
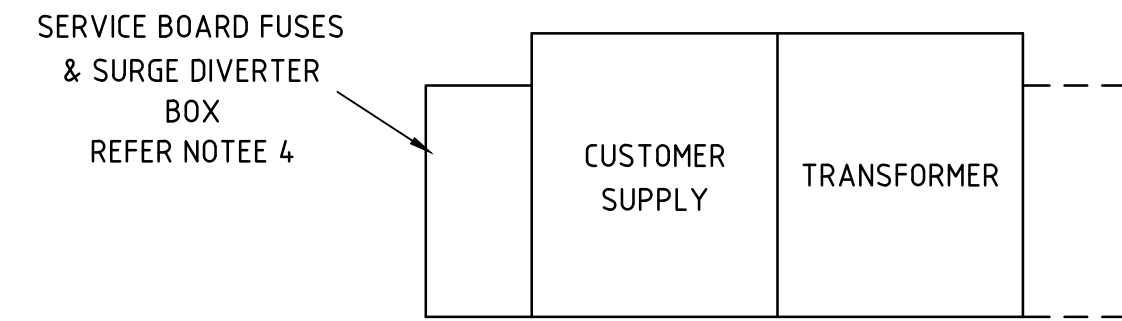
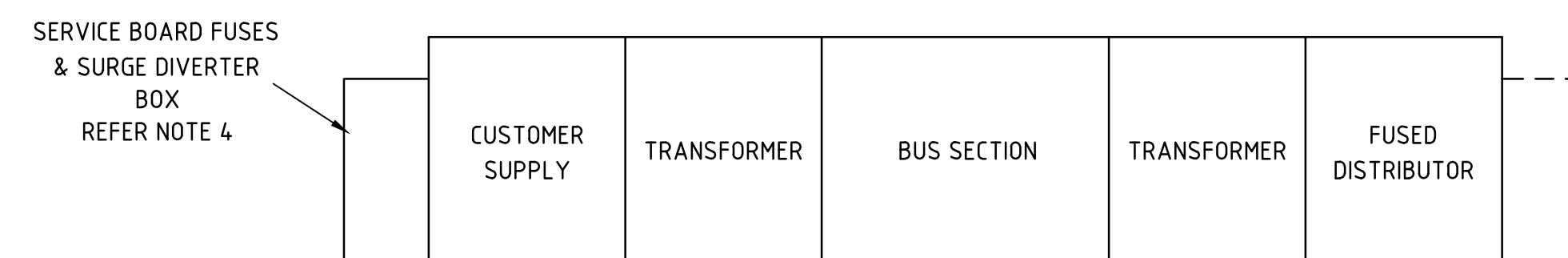
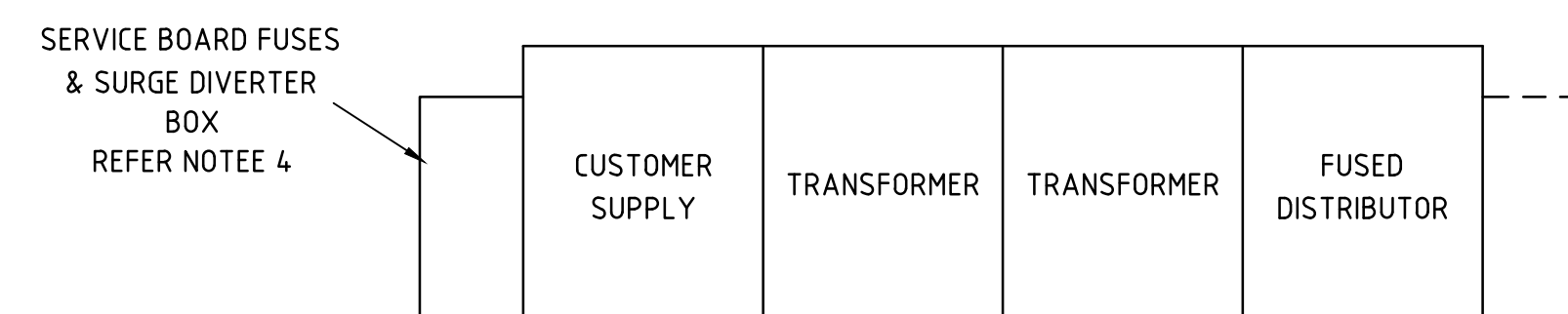
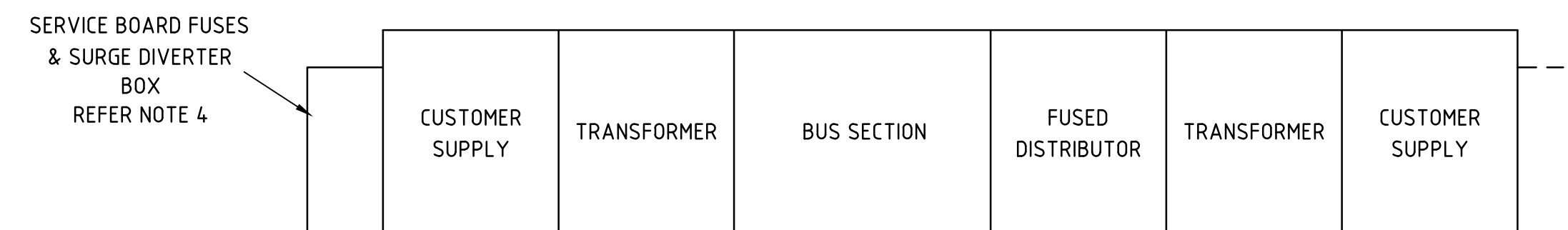
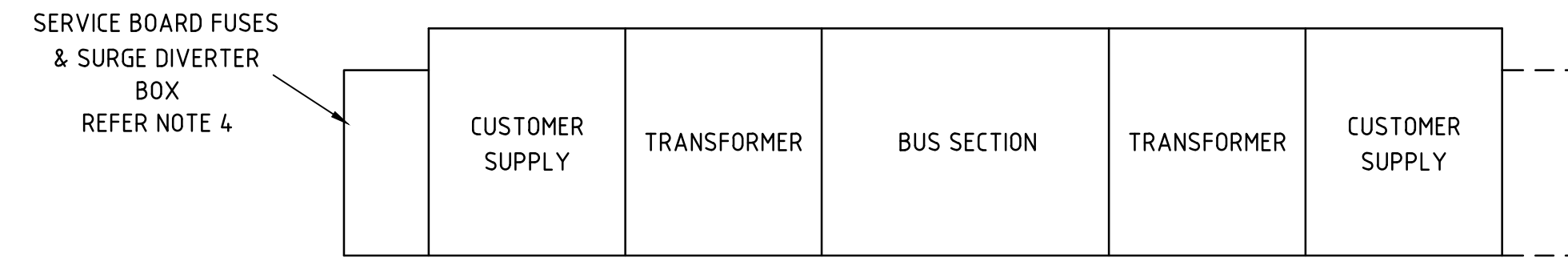
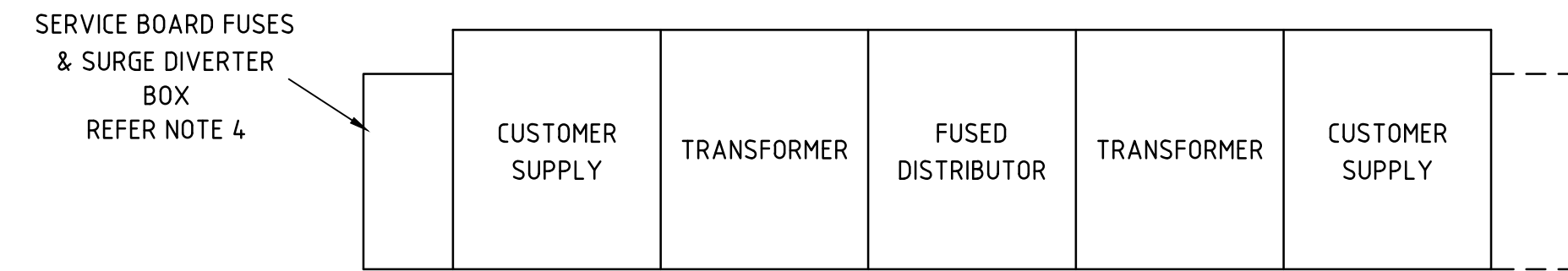
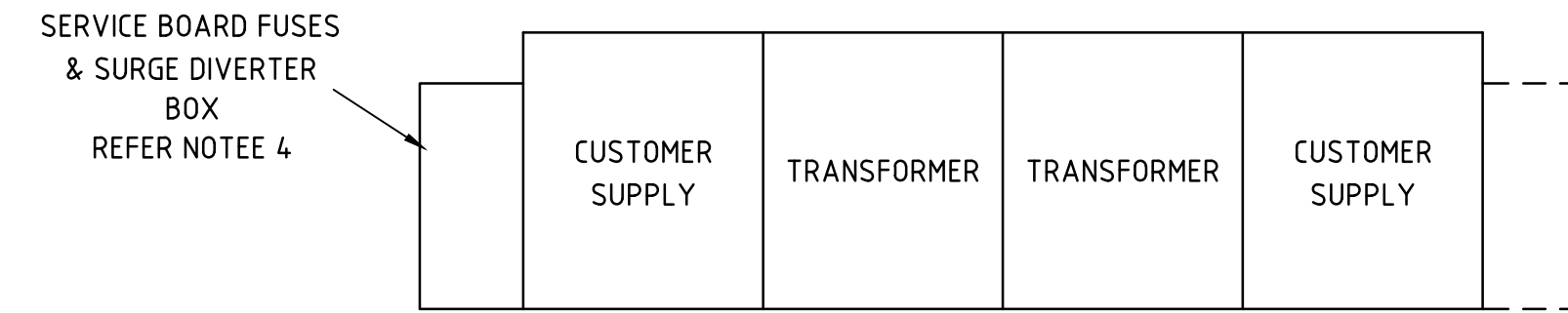


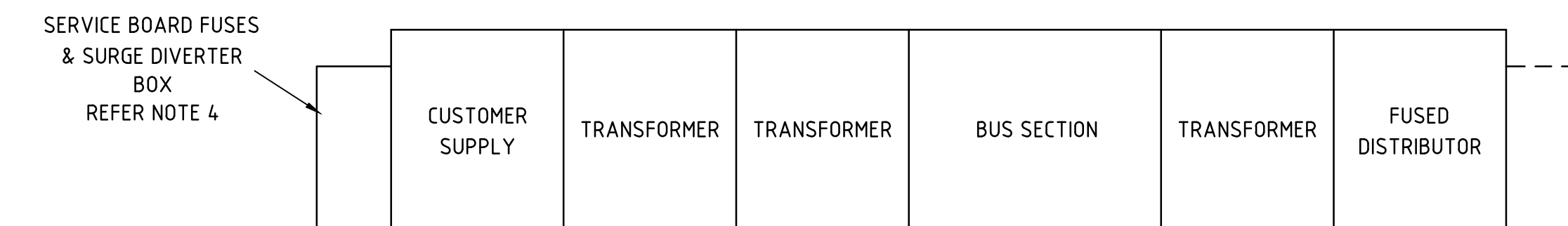
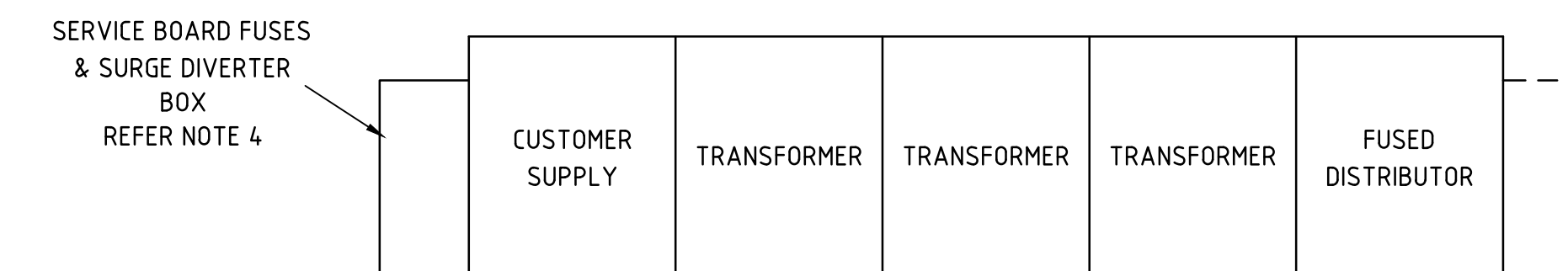
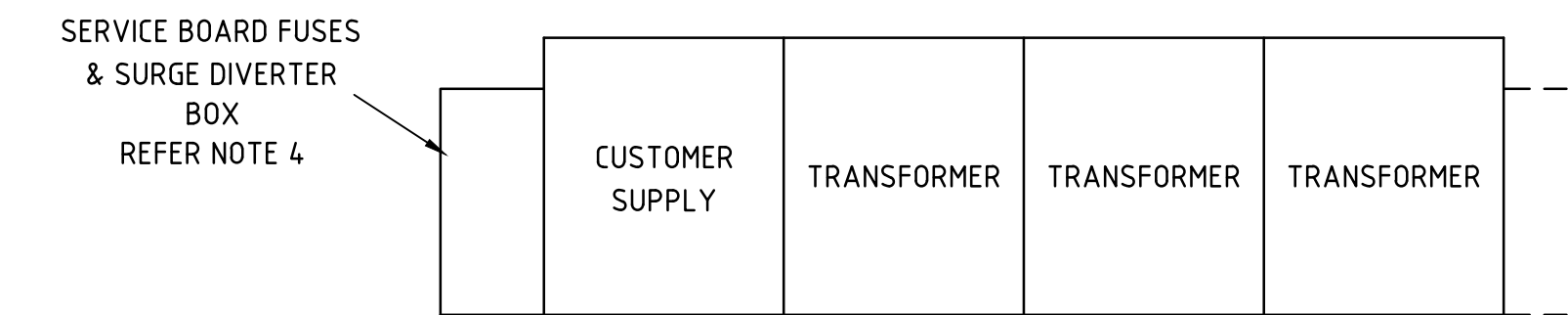
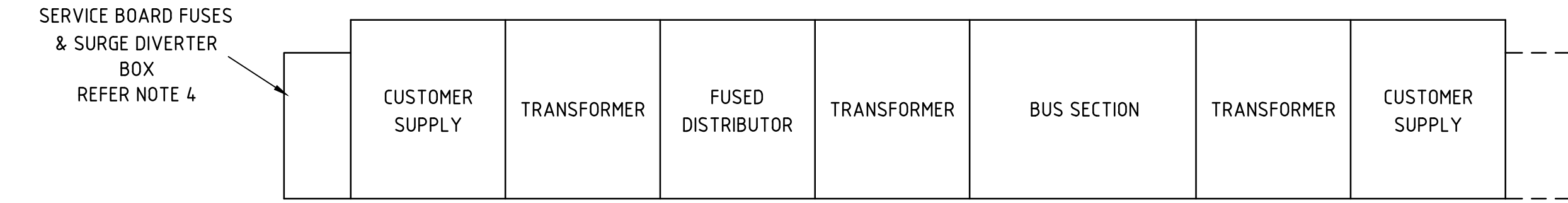
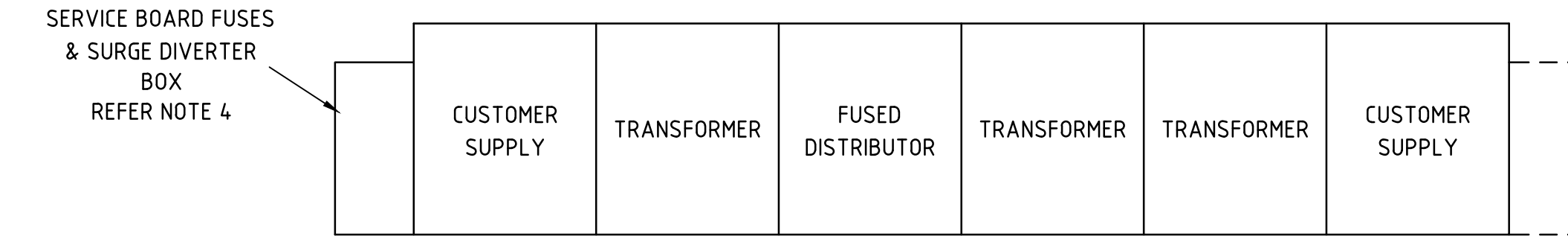
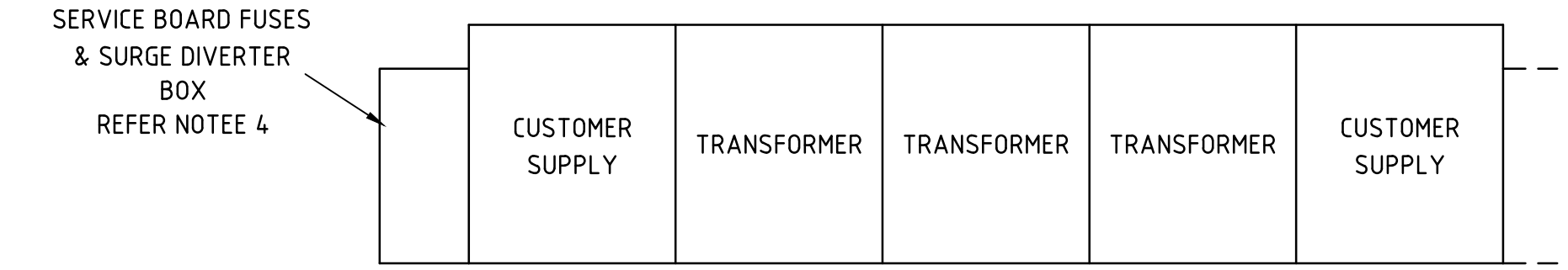
1 TRANSFORMER SUBSTATION  
PLAN VIEW



2 TRANSFORMER SUBSTATION  
PLAN VIEW



3 TRANSFORMER SUBSTATION  
PLAN VIEW



REFERENCE DRAWINGS

E TYPE LV BOARD CLEARANCES, PIT DESIGN AND CONSTRUCTION	178228-1
E TYPE LV BOARD SUPPORTING STEELWORK GENERAL ARRANGEMENT	178229-1
E TYPE LV BOARD INSTALLATION OF CABLE LADDER FOR AUXILIARY CABLES	178230-1

NOTES

- THIS DRAWING SHOWS THE ACCEPTABLE COMBINATIONS FOR E TYPE LV BOARDS WHICH ARE COMMONLY USED IN 1,2&3 TRANSFORMER SUBSTATIONS. APPROVAL FOR THE USE OF OTHER COMBINATIONS MUST BE GIVEN BY AUSGRID'S MANAGER DISTRIBUTION AUTOMATION & SUBSTATION ENGINEERING BEFORE DESIGN IS COMMENCED. IN ALL CASES THE COMBINATION CHOSEN MUST NOT ALLOW THE LOAD ON ANY SECTION OF THE LV SWITCHBOARD MAIN BUSBAR TO EXCEED 3000AMPS OR ALLOW THE SUBSTATION RATING TO BE EXCEEDED AS SPECIFIED IN AUSGRID'S NETWORK STANDARDS.
- THIS DRAWING IS TO BE READ IN CONJUNCTION WITH RELEVANT NETWORK STANDARDS.
- MIRROR IMAGES OF ALL COMBINATIONS SHOWN ON THIS DRAWING CAN BE INSTALLED.
- EACH SUBSTATION REQUIRES A SERVICE BOARD CONTROLLING FUSE & SURGE ARRESTER BOX TO BE INSTALLED AND CONNECTED AT EITHER END OF THE LV BOARD. HOWEVER IF THE LV BOARD CONTAINS A NORMALLY OPEN BUS SECTION SWITCH, THIS BOX MUST BE INSTALLED AT EACH END OF THE LV BOARD. THE SURGE ARRESTERS ARE TO BE CONNECTED IN BOTH BOXES AND THE SERVICE BOARD FUSES ARE CONNECTED IN THE BOX CLOSEST TO THE SUBSTATION SERVICE BOARD.
- PANELS DESIGNATED AS TRANSFORMER CONSIST OF AN AIR CIRCUIT BREAKER OF 2000 OR 3000 AMPS FOR SUBURBAN SUBSTATIONS AND 300 AMPS FOR CBD SUBSTATIONS.
- PANEL DESIGNATED AS CUSTOMER SUPPLY CAN CONSIST OF ANY OF THE FOLLOWING:
  - DISCONNECTOR CONTROLLED FUSED SUPPLY OF 1000 TO 1600 AMPS.
  - AIR CIRCUIT BREAKER CONTROLLED CABLE OR BUSBAR SUPPLY OF 2000 OR 3000 AMPS.
- PANELS DESIGNATED AS FUSED DISTRIBUTOR CAN CONSIST OF ONE OF THE FOLLOWING COMBINATIONS OF FUSE STRIPS OF A TOTAL OF UP TO 1600AMPS:
  - 4x400AMP, 1x800AMP + 2x400AMP, OR 2x800AMP.

CAD DRAWING DO NOT MANUALLY AMEND	AMENDMENTS	
	1. NOTES, 184, ALTERED. PN 208/6/9/4 P.JARVIS CHECKED: APPROVED: I.TROSBON M.TROSBON	20.8.07
2. NEW AUSGRID BORDER NOTES: NOTE 5, ALTERED TO REMOVE DISCONNECTORS. NOTE 6 ALTERED TO REMOVE DISCONNECTOR CONTROLLED CABLES AND SOLID LINK BUSBAR SUPPLIES. NOTE 7 CLARIFIED. PN 1005-2010-1-5-1 P.NARAYAN CHECKED: APPROVED: P.TURRIN	9.7.12	
	3. NEW UPDATED BORDER ADDED. PN 18/09/2024 M.BENNETT CHECKED: APPROVED:	

SCALE	NTS
DESIGNED	P.JARVIS
DRAWN	P.JARVIS
CHECKED	M.PEACOCK
APPROVED	P.HALLEN
DATE	06/03/2007
TRIM REF	-
PROJECT NUMBER	103/59/1/6

24-28 Campbell Street  
SYDNEY NSW 2000

E TYPE LV BOARD ACCEPTABLE COMBINATIONS			
DRAWING No	178227	SHEET	1
AMD	3	SIZE	B1