

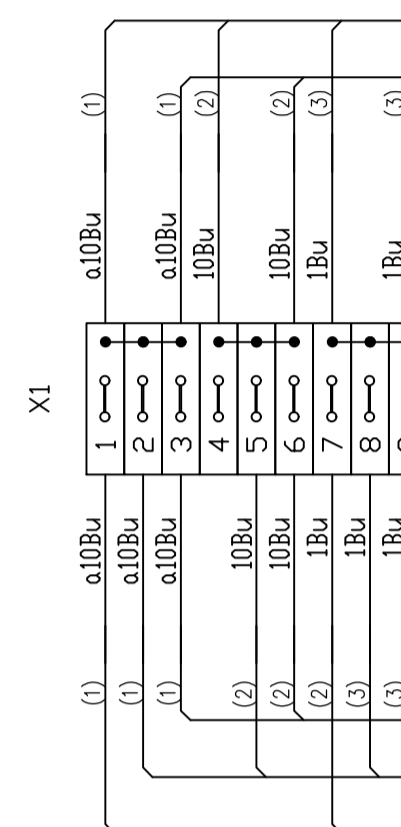
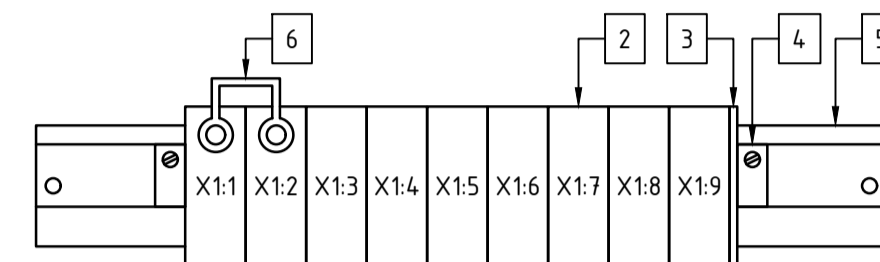
1BD/2 [TO 'B' BATTERY TERMINATION BOX (WHEN REQUIRED)]

DETAILS FOR 'B' BATTERY TEST POINT (BTP) REFER DWG'S 227350Sh4 & 227360Sh2

| ITEM No. | MFG | CAT No. | DESCRIPTION | No. OFF | AUSGRID DWG |
|----------|--------|------------|--|---------|-------------|
| 1 | FIBOX | PC 1624.09 | POLYCARBONATE ENCLOSURE WITH LID 244x164x90mm. (RS COMPONENTS PART No. 797-5392) | 1 | - |
| 2 | UTILUX | H3820 | RAIL MOUNTED TERMINAL | 3 | 11854.7 |
| 3 | UTILUX | H3821 | END PLATE FOR RAIL MOUNTED TERMINAL | 1 | 11854.7 |
| 4 | UTILUX | H2232 | END CAP FOR MOUNTING RAIL | 2 | 11854.7 |
| 5 | UTILUX | H2233 | MOUNTING CHANNEL 460mm (G-TYPE RAIL) | 1 | 11854.7 |

MATERIAL LIST FOR 'B' BATTERY TEST POINT (BTP)

| LABEL DETAIL FOR 'B' BATTERY TEST POINT (BTP) (REFER NOTE 3) | | | | | |
|---|------------------------------|------------------|-------------|------------------------|--------|
| LABEL SIZE | COLOUR | TEXT LINE | TEXT HEIGHT | ENGRAVING | No OFF |
| C8 | GRAVOPL Y No.200 WHITE/BLACK | LINE 1 LINE 2 | 8 8 | 'B' BATTERY TEST POINT | 1 |



2BD [TO Tx 1 PROTECTION PANEL]
8BD [TO SCADA PANEL]

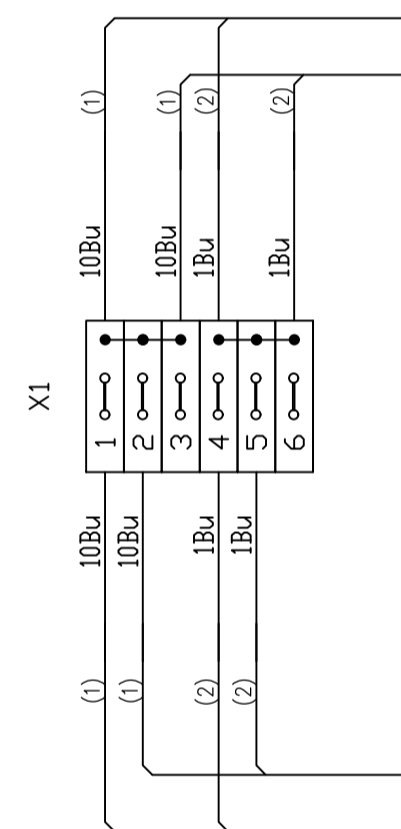
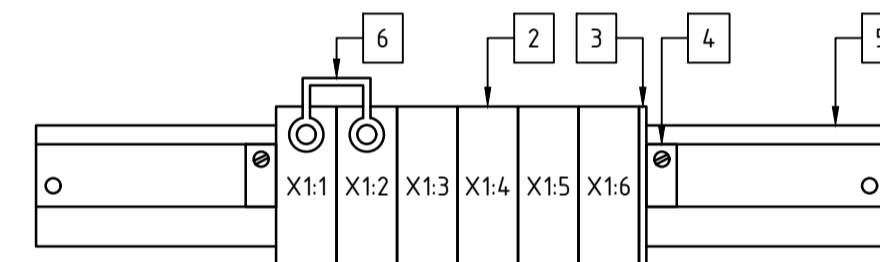
1BD/2 [TO 'B' BATTERY TEST POINT (WHEN REQUIRED)]
1BD/1 [TO 'B' BATTERY]
1BD [TO 'B' BATTERY CHARGER]

DETAILS FOR 'B' BATTERY TERMINATION BOX (BTB) REFER DWG'S 227350Sh4 & 227360Sh2

| ITEM No. | MFG | CAT No. | DESCRIPTION | No. OFF | AUSGRID DWG |
|----------|--------|------------|--|---------|-------------|
| 1 | FIBOX | PC 1624.09 | POLYCARBONATE ENCLOSURE WITH LID 244x164x90mm. (RS COMPONENTS PART No. 797-5392) | 1 | - |
| 2 | UTILUX | H3820 | RAIL MOUNTED TERMINAL | 9 | 11854.7 |
| 3 | UTILUX | H3821 | END PLATE FOR RAIL MOUNTED TERMINAL | 1 | 11854.7 |
| 4 | UTILUX | H2232 | END CAP FOR MOUNTING RAIL | 2 | 11854.7 |
| 5 | UTILUX | H2233 | MOUNTING CHANNEL 460mm (G-TYPE RAIL) | 1 | 11854.7 |
| 6 | UTILUX | H3824 | BRIDGING LINK | 6 | 11854.7 |

MATERIAL LIST FOR 'B' BATTERY TERMINATION BOX (BTB)

| LABEL DETAIL FOR 'B' BATTERY TERMINATION BOX (BTB) (REFER NOTE 3) | | | | | |
|--|------------------------------|------------------|-------------|-----------------------------|--------|
| LABEL SIZE | COLOUR | TEXT LINE | TEXT HEIGHT | ENGRAVING | No OFF |
| C8 | GRAVOPL Y No.200 WHITE/BLACK | LINE 1 LINE 2 | 8 8 | 'B' BATTERY TERMINATION BOX | 1 |



2BD [TO Tx 1 PROTECTION PANEL]
4BD [TO SCADA PANEL]

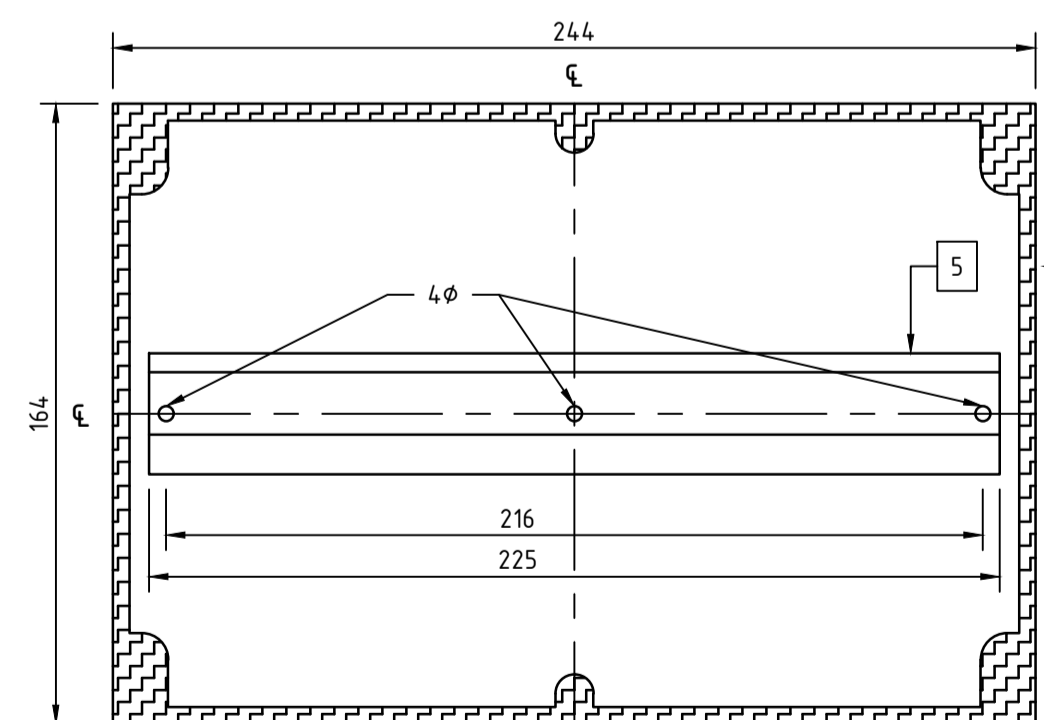
1BD/1 [TO 'B' BATTERY]
1BD [TO 'B' BATTERY CHARGER]

DETAILS FOR 'B' BATTERY TERMINATION BOX (BTB) REFER DWG 227380Sh4

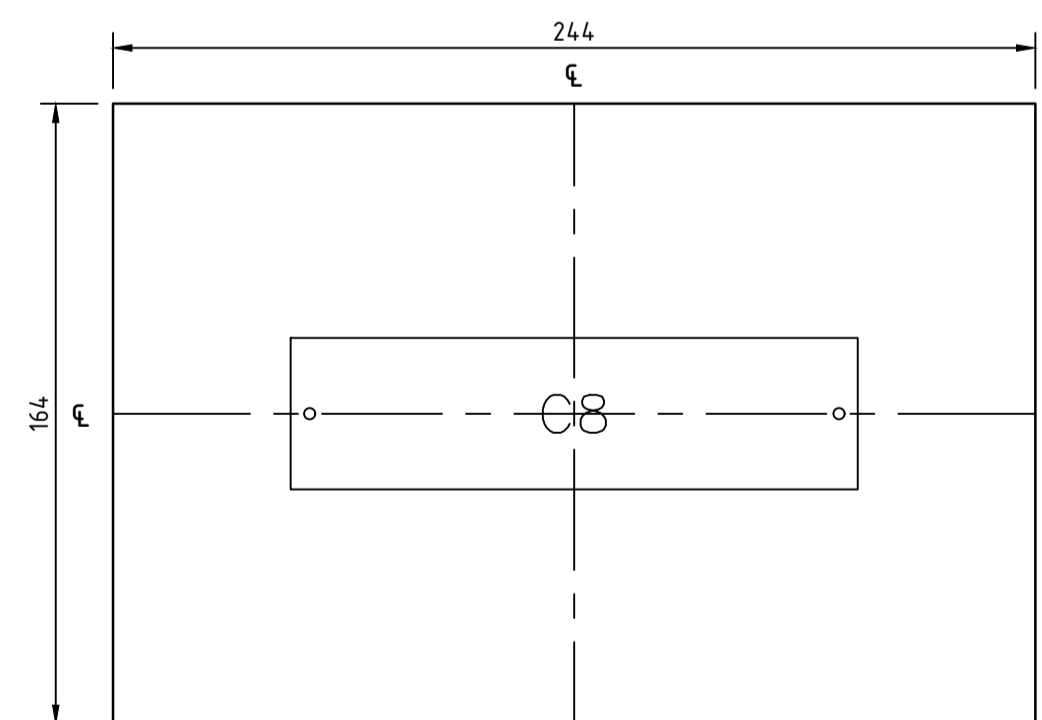
| ITEM No. | MFG | CAT No. | DESCRIPTION | No. OFF | AUSGRID DWG |
|----------|--------|------------|--|---------|-------------|
| 1 | FIBOX | PC 1624.09 | POLYCARBONATE ENCLOSURE WITH LID 244x164x90mm. (RS COMPONENTS PART No. 797-5392) | 1 | - |
| 2 | UTILUX | H3820 | RAIL MOUNTED TERMINAL | 6 | 11854.7 |
| 3 | UTILUX | H3821 | END PLATE FOR RAIL MOUNTED TERMINAL | 1 | 11854.7 |
| 4 | UTILUX | H2232 | END CAP FOR MOUNTING RAIL | 2 | 11854.7 |
| 5 | UTILUX | H2233 | MOUNTING CHANNEL 460mm (G-TYPE RAIL) | 1 | 11854.7 |
| 6 | UTILUX | H3824 | BRIDGING LINK | 4 | 11854.7 |

MATERIAL LIST FOR 'B' BATTERY TERMINATION BOX (BTB)

| LABEL DETAIL FOR 'B' BATTERY TERMINATION BOX (BTB) (REFER NOTE 3) | | | | | |
|--|------------------------------|------------------|-------------|-----------------------------|--------|
| LABEL SIZE | COLOUR | TEXT LINE | TEXT HEIGHT | ENGRAVING | No OFF |
| C8 | GRAVOPL Y No.200 WHITE/BLACK | LINE 1 LINE 2 | 8 8 | 'B' BATTERY TERMINATION BOX | 1 |



ENCLOSURE DETAILS FRONT VIEW
REFER NOTE 4.



ENCLOSURE COVER LABEL MOUNTING DETAILS

NOTES:

1. SHOWN ARE THE 'B' BATTERY CONNECTION BOXES THAT MAY BE REQUIRED AT DISTRIBUTION SUBSTATIONS THAT HAVE OPTICAL ARC FLASH DETECTION INSTALLED. REFER TO THE SUBSTATION DESIGN INFORMATION PACKAGE & RELEVANT NETWORK STANDARDS.
2. ALL DIMENSIONS ARE IN MILLIMETRES.
3. LABELS ARE TO BE MADE AS SHOWN ON DRAWING 178241 & ARE TO BE MOUNTED ON THE FRONT CENTRE OF IT'S ASSOCIATED ENCLOSURES COVER.
4. CONNECTING CABLES ARE TO BE RUN IN FLEXIBLE CONDUIT. A SUITABLE CABLE ENTRY HOLE IS TO BE DRILLED ON SITE INTO THE BASE OF THE ENCLOSURE TO SUIT THE DIRECTION OF CABLE ENTRY.

| TITLE | DWG No. | Sheet No. |
|---|---------|-----------|
| RMICB SUBSTATIONS WITH E TYPE LV BOARD DC SUPPLY CABLE LOOPING AND SCADA SCHEMATIC | 227350 | 4 |
| RMICB SUBSTATIONS WITH E TYPE LV BOARD AND OPTICAL ARC FLASH DETECTION CABLING DIAGRAM | 227355 | 1 |
| DISTRIBUTION SUBSTATION SUPPLY CABLING AND SCADA SCHEMATIC WITH H2 LV BOARDS WITH OAFD | 227360 | 2 |
| CITY DISTRIBUTION SUB WITH E TYPE LV BOARD AND OAFD DLAC PANEL SCHEMATIC, GENERAL DC SUPPLIES INTER-PANEL WIRING, FIBRE COMMS AND CABLING DIAGRAM | 227380 | 4 |
| CITY DISTRIBUTION SUBSTATIONS WITH E TYPE LV BOARD AND OPTICAL ARC FLASH DETECTION CABLING DIAGRAM | 227386 | 1 |
| SUBSTATION DIN RAIL MOUNTED TERMINALS 'UTILUX' TYPE H3820 & H3869 GENERAL ARRANGEMENT & STOCK CODE No. | 11854.7 | 1 |

REFERENCE DRAWINGS

CAD DRAWING
DO NOT MANUALLY AMEND
AMENDMENTS
1. BORDER & TITLEBLOCK UPDATED
M.BENNETT
CHECKED:
M.BENNETT
APPROVED:



| SCALE | 1:2 |
|----------------|--------------|
| DESIGNED | L.MARTINUZZI |
| DRAWN | L.MARTINUZZI |
| CHECKED | E.KAIROUZ |
| APPROVED | M.BENNETT |
| DATE | 23/01/2017 |
| TRIM REF | - |
| PROJECT NUMBER | - |

| DISTRIBUTION SUBSTATION WITH OPTICAL ARC FLASH DETECTION TERMINAL BOX DETAILS FOR 48V 'B' BATTERY SYSTEM | | | |
|--|--------|---------|-------|
| DRAWING No | 227379 | SHEET 1 | AMD 1 |
| SIZE | A1 | | |