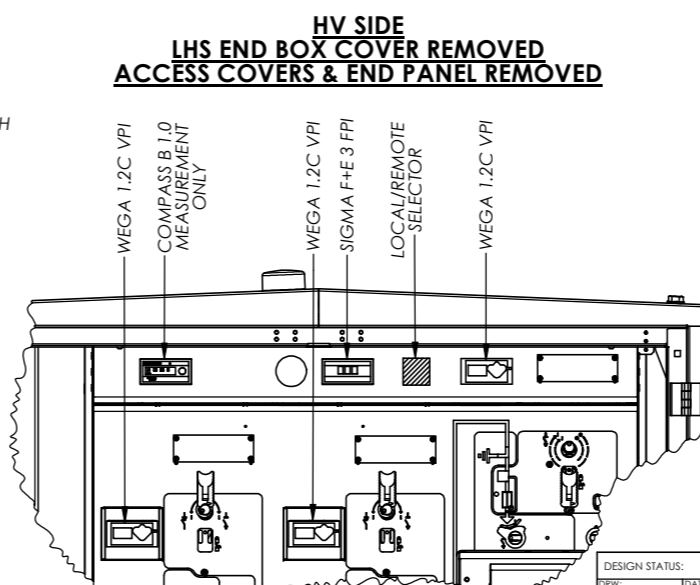
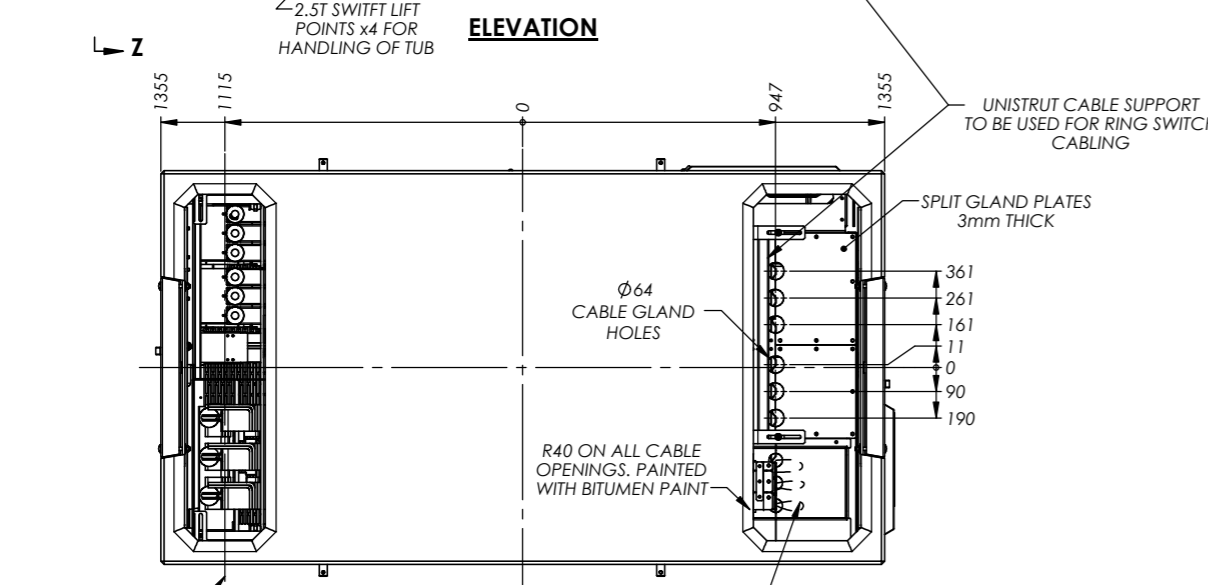
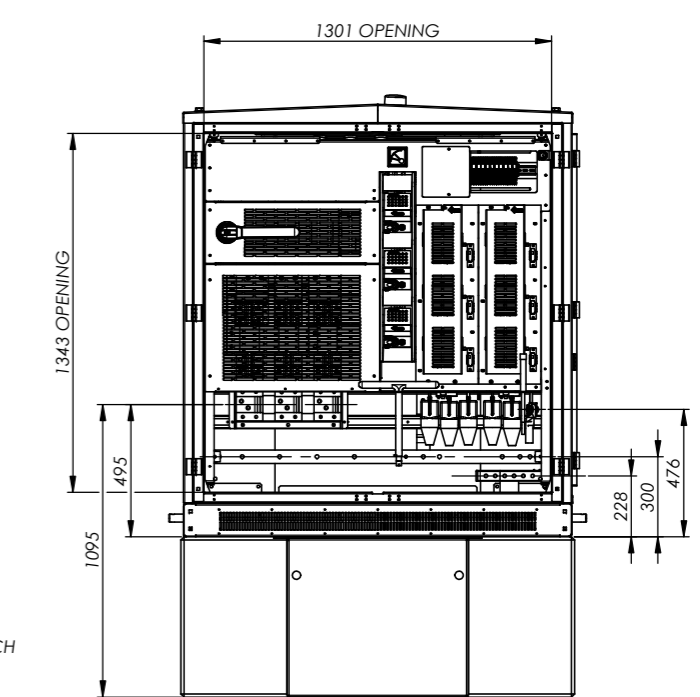
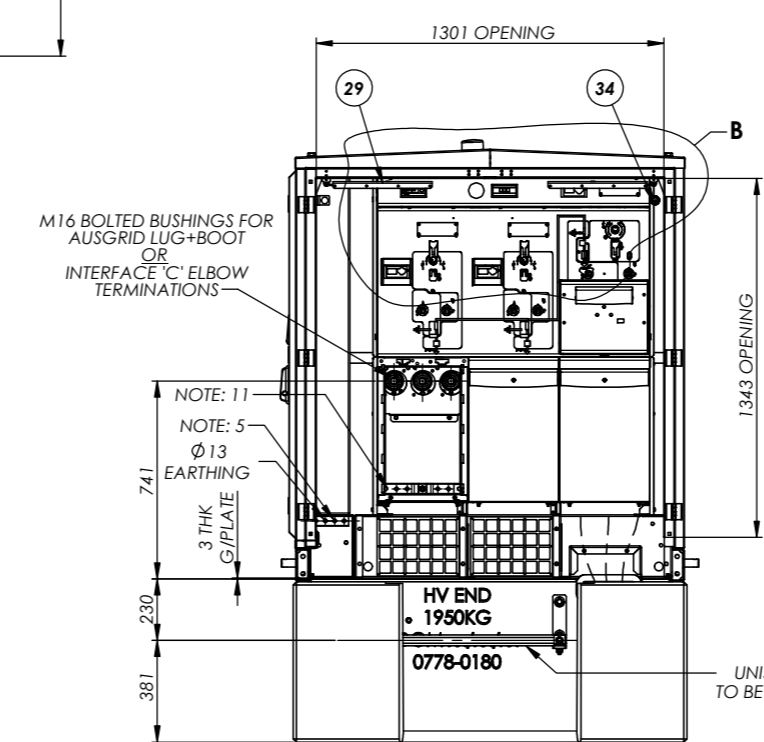
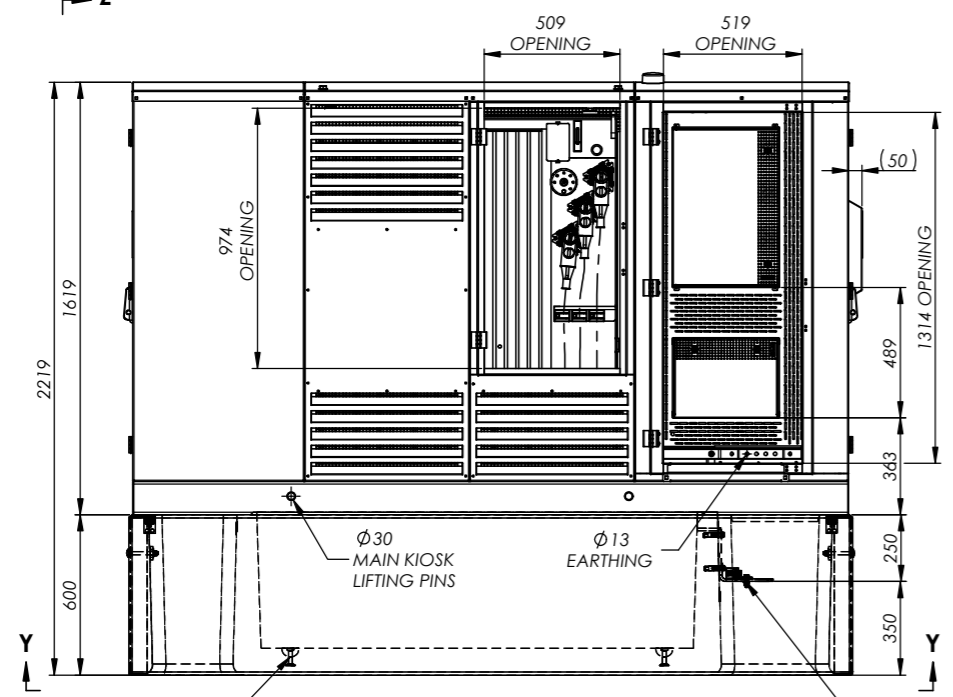


CONFIGURATION TABLE													
Contract Item #	Ausgrid Stockcode #	Tyree Stockcode #	Rating	Txfr GA Drawing #	Kiosk Mass / Serial Plate P/No.	Txfr Rating Plate P/No.	LV Switchgear Configuration	LV Switchgear P/No.	Tank Assembly P/No.	Cover Assembly P/No.	LV Infill Panel P/No.	Tapswitch P/No. / Rating	LV Bushing P/No. / Rating
1.1	176837	400K4AU01-B	400kVA	0750-1611	0052-0463	0050-3240	3x 400A F/S	4500-0240	0770-1312	0773-1321	0777-1511	0562-1923 60A	0551-0129 1000A
1.2	176839	400K4AU02-B	400kVA				4x 400A F/S	4500-0241					
1.3	-----	400K4AU03-B	400kVA				1x 800A S/F + 1x 400A F/S	4500-0243					
2.1	176847	600K4AU01-B	600kVA	0750-1612	0052-0464	0050-3241	3x 400A F/S	4500-0240	0770-1313	0773-1322	0777-1512	0562-1936 100A	0551-0130 1600A
2.2	176848	600K4AU02-B	600kVA				4x 400A F/S	4500-0241					
2.3	-----	600K4AU03-B	600kVA				1x 800A S/F + 1x 400A F/S	4500-0243					
2.4	176849	600K4AU04-B	600kVA	1x 800A S/F + 2x 400A F/S	4500-0244								
3.1	176863	800K4AU01-B	800kVA	0750-1613	0052-0465	0050-3242	4x 400A F/S	4500-0241	0770-1314	0773-1323	0777-1513	0562-1936 100A	0551-0130 1600A
3.2	176864	800K4AU02-B	800kVA				1x 800A S/F + 2x 400A F/S	4500-0244					
3.3	179622	800K4AU03-B	800kVA				1x 800A S/F + 3x 400A F/S	4500-0245					
3.4	176865	800K4AU04-B	800kVA				2x 800A S/F + 1x 400A F/S	4500-0246					
3.5	176866	800K4AU05-B	800kVA				1x 1200A S/F + 1x 400A F/S	4500-0247					
3.6	178538	800K4AU06-B	800kVA				1x 1200A S/F + 2x 400A F/S	4500-0248					
4.1	-----	1000K4AU01-B	1000kVA	0750-1614	0052-0466	0050-3243	4x 400A F/S	4500-0241	0770-1315	0773-1324	0777-1475	0562-1936 100A	0551-0131 2000A
4.2	178155	1000K4AU02-B	1000kVA				5x 400A F/S	4500-0242					
4.3	179591	1000K4AU03-B	1000kVA				1x 800A S/F + 3x 400A F/S	4500-0245					
4.4	176621	1000K4AU04-B	1000kVA				2x 800A S/F + 1x 400A F/S	4500-0246					
4.5	178281	1000K4AU05-B	1000kVA				1x 1600A S/F + 1x 400A F/S	4500-0249					
4.6	178282	1000K4AU06-B	1000kVA				1x 1600A S/F + 2x 400A F/S	4500-0250					



SUMMARY OF MASSES (kg) BY KIOSK RATING				
	400kVA	600kVA	800kVA	1000kVA
TANK & FITTINGS	550	660	755	810
ENCLOSURE	395			
STEEL BASE	490			
OIL VOLUME (L/kg)	375 / 330	650 / 565	715 / 625	815 / 710
CORE & COIL	700	1090	1620	2140
HV SWITCHGEAR	450			
LV SWITCHGEAR	380			
KIOSK MASS (MAX)	3295	4030	4715	5375
CONCRETE TUB	1950			
TOTAL MASS (MAX)	5245	5980	6665	7325

258091-2

DESIGN STATUS:	3RD ANGLE PROJECTN	TYREE	TITLE	'L' TYPE KIOSK ARRANGEMENT TYREE 'K4AU' SERIES CONFIGURATIONS & DIMENSIONS	PROJECT REF:
DRW: NM DATE: 27/05/2022	DEBURR & BREAK ALL SHARP EDGES		TYree Industries Pty Ltd		NSW 2575 AUSTRALIA
CHK: RT DATE: 27/05/2022	DO NOT SCALE	TYree Industries Pty Ltd	NSW 2575 AUSTRALIA	DRW NO/Stock Code	0750-1633-B
APP: NM DATE: 27/05/2022		TYree Industries Pty Ltd	NSW 2575 AUSTRALIA	DRW NO/Stock Code	0750-1633-B
MFG: DATE:		TYree Industries Pty Ltd	NSW 2575 AUSTRALIA	DRW NO/Stock Code	0750-1633-B
G.A.: DATE:		TYree Industries Pty Ltd	NSW 2575 AUSTRALIA	DRW NO/Stock Code	0750-1633-B

SHEET:	2 OF 2	MODIF NO:	-
SCALE:	1:20	REV	B
SIZE:	A2		