

A

B

C

D

E

F

A

B

C

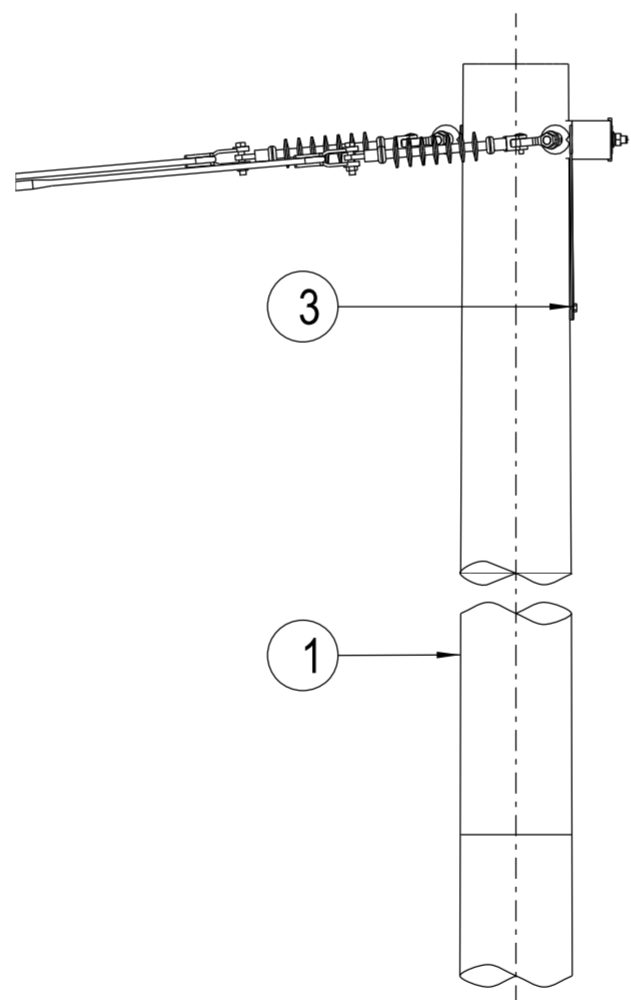
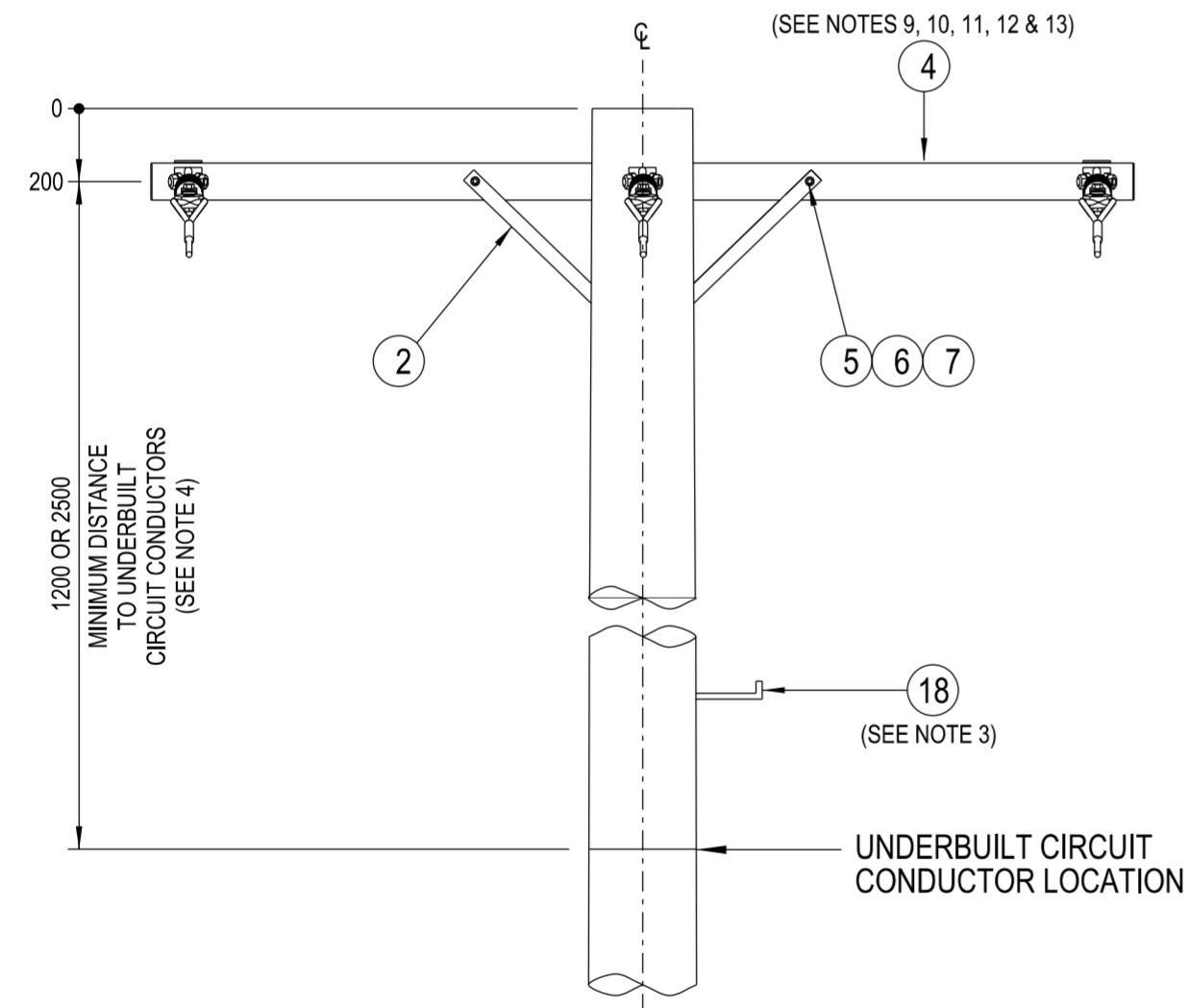
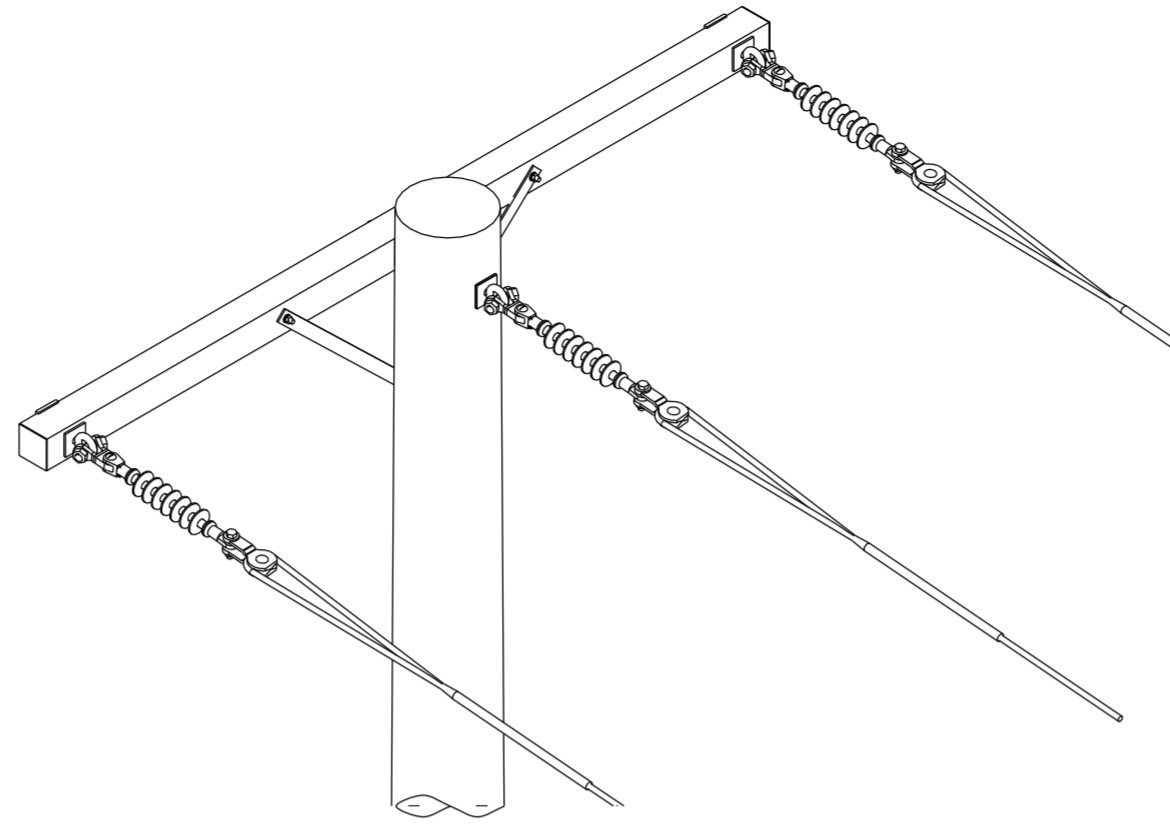
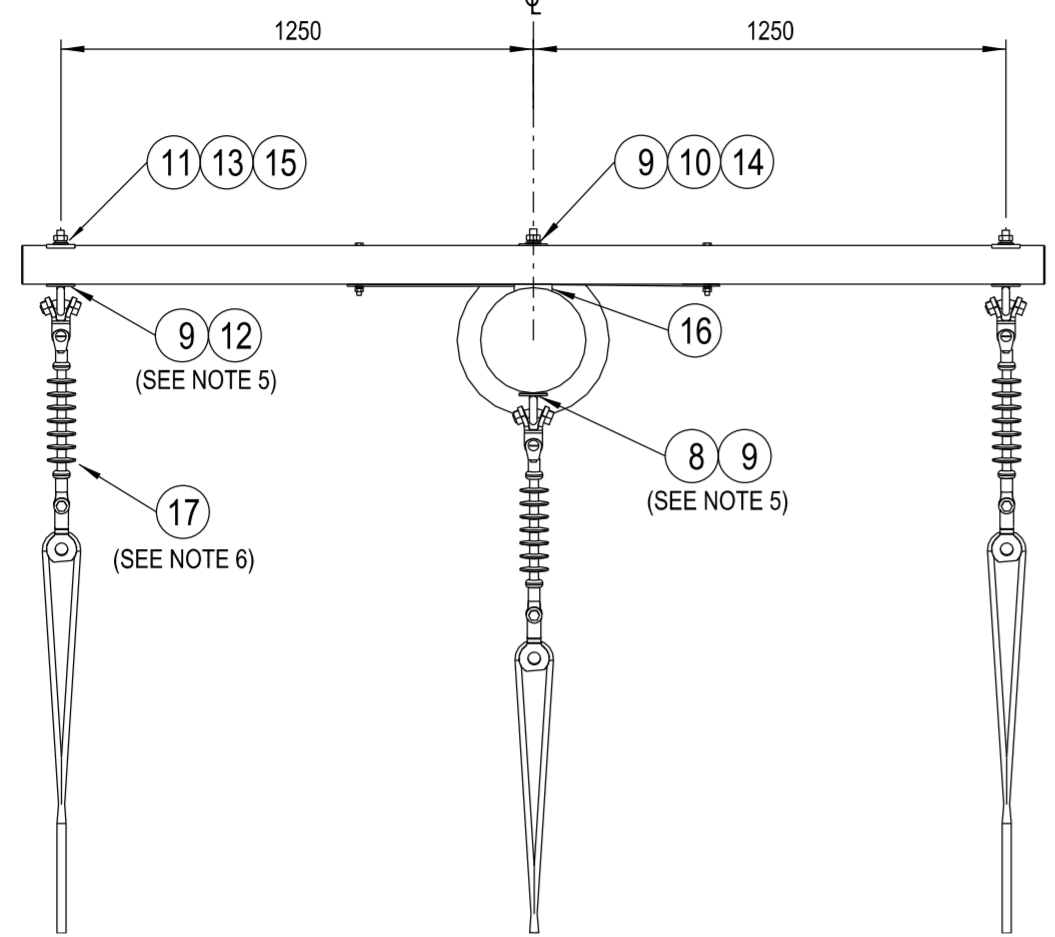
D

E

F

NOTES :

1. THE FOLLOWING INFORMATION IS OBTAINED FROM THE PROJECT DESIGN DRAWINGS:
 - a. POLE LENGTH AND STRENGTH.
 - b. SPECIAL FOUNDATION REQUIREMENTS.
 - c. POLE EMBEDMENT DEPTH.
 - d. CONDUCTOR SIZE.
 - e. CROSSARM SIZE AND BRACE REQUIREMENTS.
 - f. STAY REQUIREMENTS.
 - g. DEVIATION ANGLE.
2. THE MAXIMUM LINE DEVIATION ANGLE TO BE CONSTRUCTED ON THIS ARRANGEMENT IS TO BE DETERMINED BY THE LINE DESIGNER.
3. POLE STEPS ARE TO BE INSTALLED IN ACCORDANCE WITH THE REQUIREMENTS OF NS128.
4. IN AREAS WHERE THE 22kV NETWORK CANNOT BE WORKED ON USING LIVE LINE TECHNIQUES, UNDERBUILT CIRCUITS SHALL BE INSTALLED WITH A MINIMUM CLEARANCE OF 1200mm. IN AREAS WHERE THE 22kV NETWORK CAN BE WORKED ON USING LIVE LINE TECHNIQUES, UNDERBUILT CIRCUITS SHALL BE INSTALLED WITH A MINIMUM CLEARANCE OF 2500mm.
5. THE LOAD AND DEVIATION ALLOWABLE ON THE EYEBOLTS IS TO BE DETERMINED FROM DRG: 520324.
6. LONGROD INSULATORS TO BE USED UNDER NORMAL CONDITIONS.
7. POLES SHALL BE DRILLED, SCARFED AND DRESSED ON SITE. DRILLING AND SCARFING TO BE TREATED WITH APPROVED PRESERVATIVES.
8. ALL BOLTS PASSING THROUGH TIMBER ARE TO BE COATED WITH GRAPHITE GREASE.
9. COMPOSITE FIBRE CROSSARMS ARE TO BE USED AS THE PREFERRED OPTION UNDER NORMAL CIRCUMSTANCES.
10. A 2706mm COMPOSITE FIBRE CROSSARM IS TO BE USED AS THE DEFAULT CROSSARM. A LONGER CROSSARM IS TO BE USED WHERE ADDITIONAL MID SPAN SEPARATION IS REQUIRED. A STEEL CROSSARM IS TO BE USED WHEN THE MAXIMUM LOAD OF THE ALTERNATE CROSSARMS IS EXCEEDED.
11. ONLY THE 2706mm COMPOSITE FIBRE CROSSARM OPTION IS SHOWN ON THIS CONSTRUCTION DRAWING. REFER TO DRGS: 262732, 514373 & 514377 FOR DRILLING PATTERN OF ALTERNATE CROSSARMS.
12. FOR DETAILS OF APPROVED ALTERNATE WAGNER COMPOSITE FIBRE CROSSARMS, REFER TO DRG: 265964.
13. WHEN SPECIFYING WAGNER COMPOSITE FIBRE CROSSARMS, A REVIEW OF ALL THE HARDWARE ATTACHED TO THE CROSSARM WILL BE REQUIRED.
14. REFER TO DESIGNER SAFETY REPORT D21/48487 FOR ATYPICAL HAZARDS ASSOCIATED WITH THIS STANDARD CONSTRUCTION.



ITEM	DESCRIPTION	DRG. No	STOCK CODE	QTY
18	STEP - POLE, SCREW-IN (SEE NOTE 3)	250144	185198	A/R
17	INSULATOR - 11/22kV LONGROD, STRING ARRANGEMENT AR-2 (SEE NOTE 6)	565715		3
16	BLOCK - GAIN, ALUMINIUM, 100mm		146274	1
15	WASHER - FLAT, M20, GALVANISED (USE WITH 2700mm CROSSARM)	518081	177986	2
14	WASHER - FLAT, M20, GALVANISED	518081	177986	1
13	WASHER - LIP, M24, GALVANISED	518081	176912	2
12	EYEBOLT - M20x200mm, GALVANISED (SEE NOTE 5)	513653	H37881	2
11	WASHER - CONICAL, M20, GALVANISED (USE WITH HARDWOOD CROSSARM)	518082	H39655	2
	WASHER - SPRING, M20, GALVANISED (USE WITH COMPOSITE FIBRE & STEEL CROSSARMS)	518082	175569	
10	WASHER - CONICAL, M20, GALVANISED	518082	H39655	1
9	WASHER - SQUARE, 75x75x6mm, GALVANISED (Ø22mm HOLE)	518081	H39231	4
8	EYEBOLT - M20, GALVANISED (LENGTH TO SUIT POLE) (SEE NOTE 5)	513653		1
7	WASHER - CONICAL, M12, GALVANISED (USE WITH HARDWOOD CROSSARM)	518082	H39639	2
	WASHER - SPRING, M12, GALVANISED (USE WITH COMPOSITE FIBRE & STEEL CROSSARMS)	518082	H12047	
6	WASHER - FLAT, M12, GALVANISED	518081	177982	4
	BOLT & NUT - M12x180mm, HEX., GALVANISED (USE WITH 2700mm & 3000mm CROSSARMS)	515466	46888	
	BOLT & NUT - M12x130mm, HEX., GALVANISED (USE WITH 2706mm & 3006mm CROSSARMS)	515466	46805	
	CROSSARM - 3000x150x100x5mm, RHS, GALVANISED (SEE NOTES 9, 10, 11, 12 & 13)	514377	H23787	
4	CROSSARM - 2700x150x100mm, TYPE C, HARDWOOD (SEE NOTES 9, 10, 11, 12 & 13)	514373	H23907	1
	CROSSARM - 3006x102x102mm, TYPE 13, COMPOSITE FIBRE (SEE NOTES 9, 10, 11, 12 & 13)	262732	186783	
	CROSSARM - 2706x102x102mm, TYPE 12, COMPOSITE FIBRE (SEE NOTES 9, 10, 11, 12 & 13)	262732	186782	
3	SCREW - COACH, M12x100mm, GALVANISED		H40484	1
2	BRACE - CROSSARM, FLAT, 690mm, GALVANISED	514385	H17738	2
1	POLE - TIMBER (AS REQUIRED)	513988		1

ALL DIMENSIONS IN MILLIMETRES UNLESS NOTED OTHERWISE. DO NOT SCALE.

CAD DRAWING DO NOT MANUALLY AMEND AMENDMENTS	DATE: 21/11/2023 COMPOSITE CROSSARMS ADDED TO MATERIAL LIST. NOTES & DIMENSIONS AMENDED.	DATE: 25/09/2024 NOTES & MATERIAL LIST AMENDED. ASSOCIATED DRAWING ADDED.	DATE: 25/09/2024 WAGNER CROSSARM OPTION REMOVED FROM MATERIAL LIST. NOTES ADDED.
DWN: P.R.	APPD: G.F.	APPD: G.F.	APPD: G.F.
CHKD: P.J.	CHKD: P.J.	CHKD: P.J.	CHKD: P.J.

ASSOCIATED DRAWINGS	
COMPOSITE FIBRE CROSSARMS WAGNER SPECIFICATION	265964
2700mm CROSSARMS FOR LV, 11kV, 22kV AND 33kV CONSTRUCTION DETAILS	514373
COMPOSITE FIBRE CROSSARMS SPECIFICATION	262732
HV TERMINATION STEEL CROSSARM CONSTRUCTION DETAILS	514377
20mm EYEBOLT LOADING & DEVIATION GRAPH	520324

NETWORK STANDARD

 145 NEWCASTLE RD WALLSEND,
 NSW 2287

SCALE	1:20	STANDARD CONSTRUCTION 22kV TERMINATION CONSTRUCTION 3-10	SIZE A2	DRAWING No 513991	SHEET 1	AMD 8
DESIGNED	-					
DRAWN	PETER SAUNDERS					
CHECKED	P.A.S.					
APPROVED	R.BREMELL					
DATE	26/03/1996					
PROJECT NUMBER	STD					
PROJTRAK NUMBER	-					