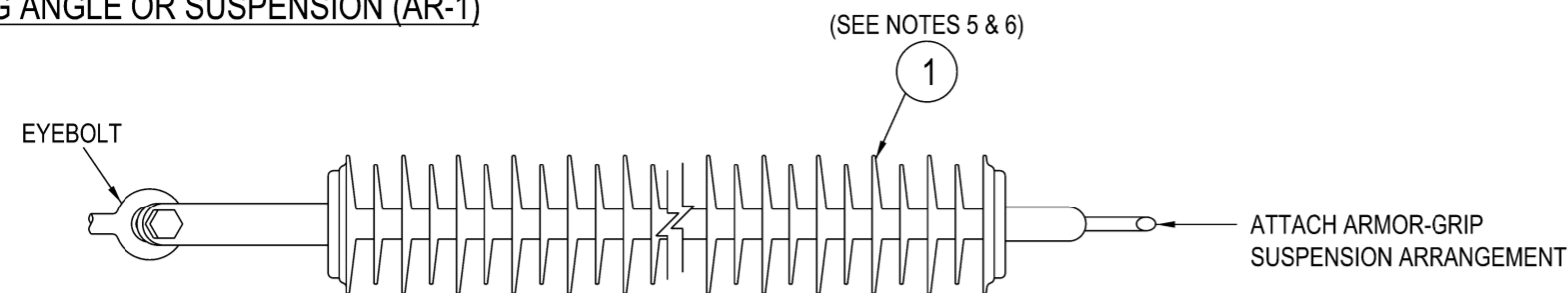
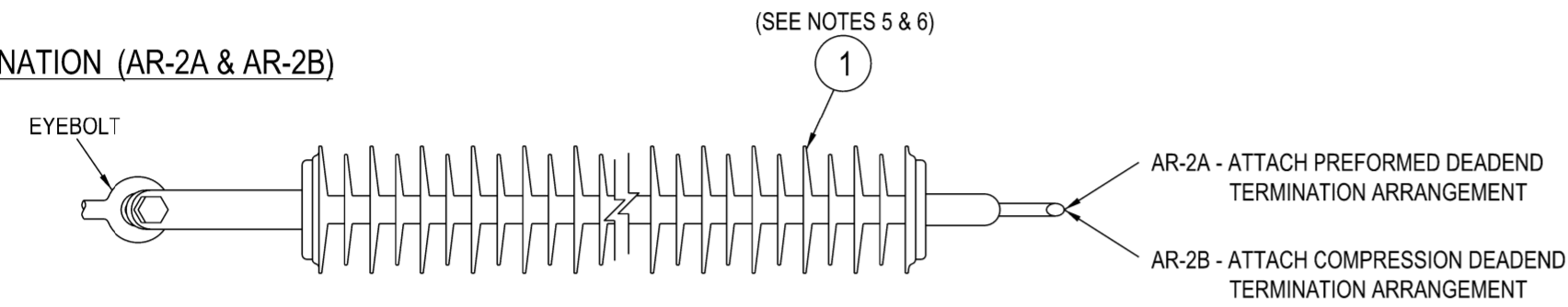


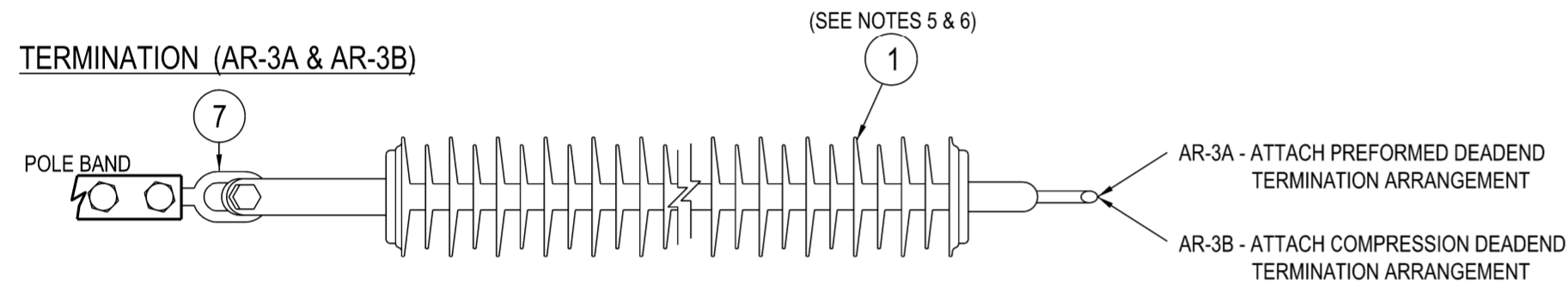
**FLYING ANGLE OR SUSPENSION (AR-1)**



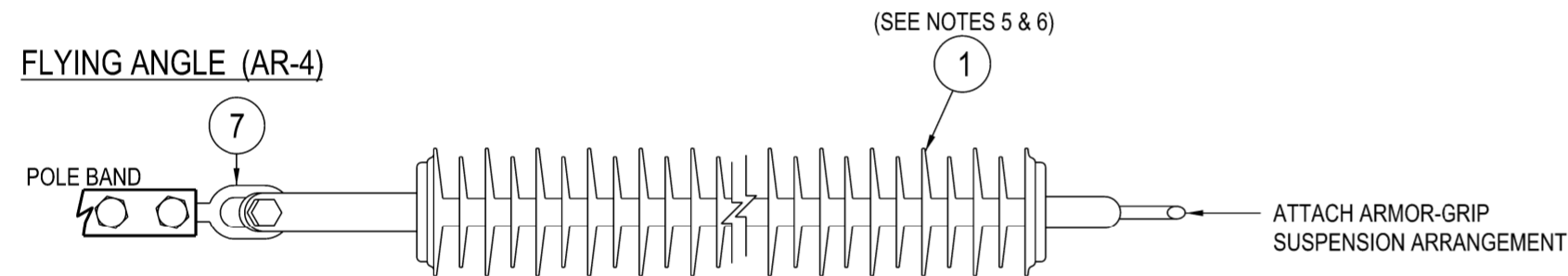
**TERMINATION (AR-2A & AR-2B)**



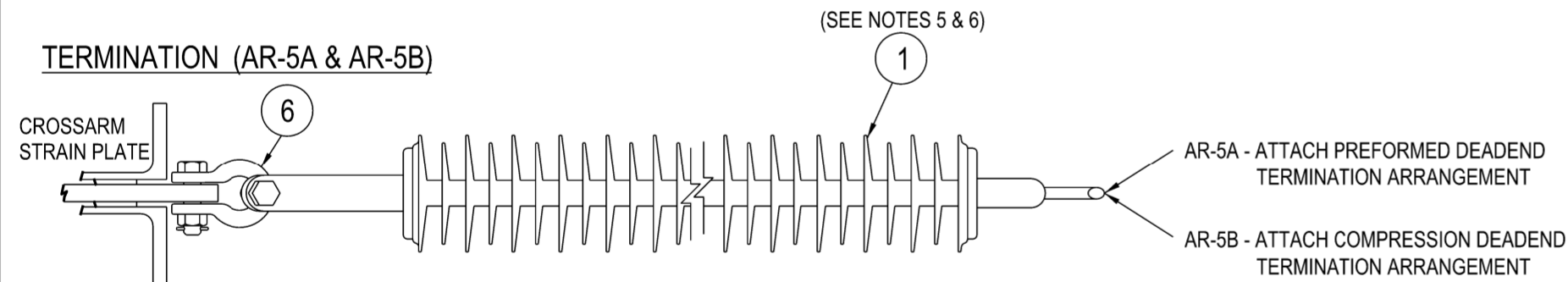
**TERMINATION (AR-3A & AR-3B)**



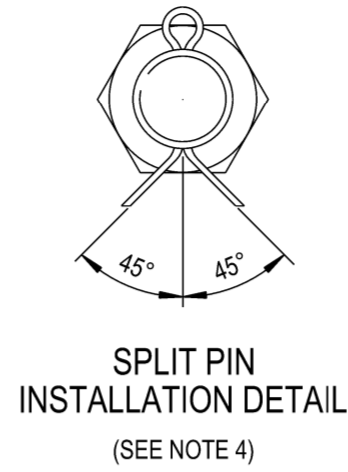
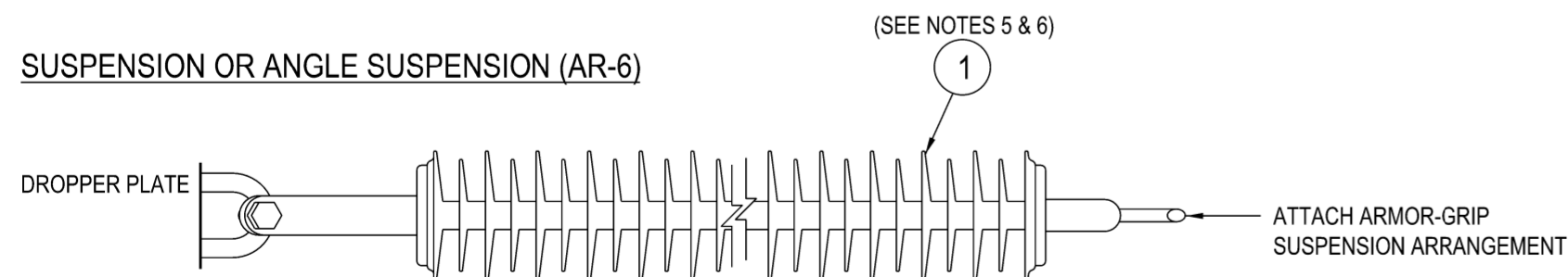
**FLYING ANGLE (AR-4)**



**TERMINATION (AR-5A & AR-5B)**

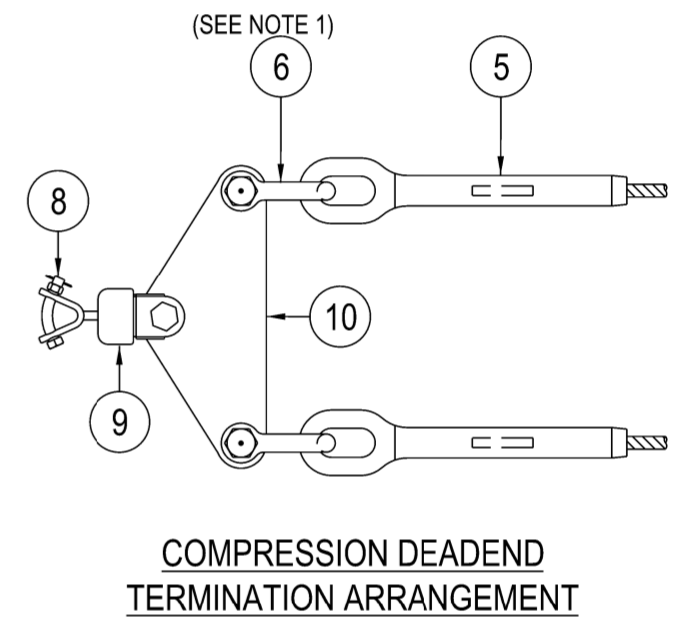
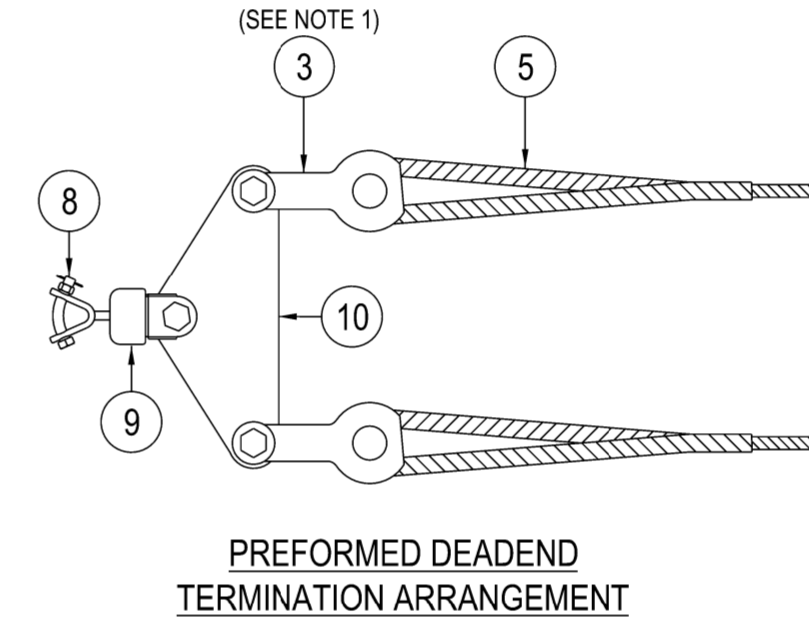
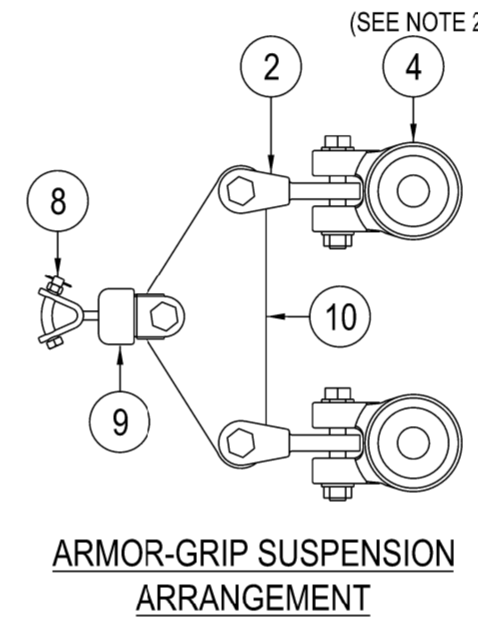


**SUSPENSION OR ANGLE SUSPENSION (AR-6)**



**NOTES :**

- CONDUCTORS TERMINATED WITH PREFORMED DEADENDS ARE TO USE A CLEVIS THIMBLE ARRANGEMENT TO ATTACH TO THE LONGROD INSULATOR. CONDUCTORS TERMINATED WITH COMPRESSION DEADENDS ARE TO USE A SHACKLE TO ATTACH TO THE LONGROD INSULATOR.
- AN ARMOR-GRIP SUSPENSION CLAMP SUPPLIED WITH A 16mm BOLT IS TO BE USED WITH A.A.C., A.A.A.C. OR A.C.S.R. CONDUCTOR. AN OFFSET SUSPENSION CLAMP IS TO BE USED WITH COPPER CONDUCTOR.
- THE ULTIMATE STRENGTH OF THE COMPONENTS IN THESE TERMINATION ARRANGEMENTS ARE :
  - SYNTHETIC COMPOSITE INSULATOR - 120kN
  - EYE/TONGUE - 160kN
  - REMAINING OVERHEAD LINE FITTINGS - 70kN
- HARDWARE SUPPLIED WITH STAINLESS STEEL SPLIT PINS WILL HAVE THEM INSTALLED IN ACCORDANCE WITH THE DETAIL SHOWN.
- THE STANDARD LONGROD INSULATOR IS TO BE USED UNDER NORMAL OPERATING CONDITIONS. THE EXTREME POLLUTION INSULATOR IS TO BE USED IN HIGH POLLUTION & SALT LADEN ENVIRONMENTS.
- THE NUMBER OF INSULATOR SHEDS SHOWN IS NOMINAL. THIS MAY VARY DEPENDING ON SUPPLIER.



10	PLATE - YOKE, PLP PART No: YPT-070-250			1	1	1	1	1	1	1	1	1	1	1
9	SOCKET - CLEVIS, 70kN, REF.70/SC, A.S.1154.2, PLP PART No: SC-070-1			1	1	1	1	1	1	1	1	1	1	1
8	BALL - 'Y' CLEVIS, 70kN, REF.70/BYC, A.S.1154.2	181807		1	1	1	1	1	1	1	1	1	1	1
7	EYE - TONGUE, 160kN, A.S.1154.2	183889				1	1	1						
6	SHACKLE - BOW, 70kN, REF.70/S, A.S.1154.2	30890				2		2			1	3		
5	DEADEND - PREFORMED ( TO SUIT CONDUCTOR ) (SEE NOTE 1)	514098			2		2				2			
	DEADEND - COMPRESSION ( TO SUIT CONDUCTOR ) (SEE NOTE 1)	514053				2		2				2		
4	CLAMP - SUSPENSION, OFFSET (TO SUIT COPPER CONDUCTOR) (SEE NOTE 2)	514132		2						2				2
	CLAMP - SUSPENSION, ARMOR-GRIP (TO SUIT CONDUCTOR) (SEE NOTE 2)	514132												
3	CLEVIS - THIMBLE, 70kN, A.S.1154.2 (TO SUIT CONDUCTOR) (SEE NOTE 1)	514132			2		2				2			
2	TONGUE - CLEVIS, TWISTED, 70kN, REF.70/TCT, A.S.1154.2	185213	2							2				2
1	INSULATOR - LONGROD, 66kV, POLYMERIC, 120kN (EYE/Y-CLEVIS) (SEE NOTE 6)	178292												
	INSULATOR - LONGROD, 132kV, POLYMERIC, 120kN (EYE/Y-CLEVIS) (EXTREME POLLUTION) (SEE NOTES 5 & 6)	178275	1	1	1	1	1	1	1	1	1	1	1	1
	INSULATOR - LONGROD, 132kV, POLYMERIC, 120kN (EYE/Y-CLEVIS) (SEE NOTES 5 & 6)	H117721												
ITEM	DESCRIPTION	DRG.No.	STOCK CODE	AR-1	AR-2A	AR-2B	AR-3A	AR-3B	AR-4	AR-5A	AR-5B	AR-6	QTY	

F	CAD DRAWING DO NOT MANUALLY AMEND AMENDMENTS														
	DWN: PATRICIA RIOS CHKD: PHILLIP JONES														
	DATE: 15/01/2019 DRAWING TITLE & NOTES AMENDED.														
APPD by: GLENN FORD															
DWN: P.RIOS CHKD: P.JONES															
DATE: 16/08/2021 ITEM 2 - MATERIAL LIST AMENDED															
APPD by: G.FORD															
DWN: P.RIOS CHKD: P.JONES															
DATE: 10/01/2022 ITEM 2 - MATERIAL LIST AMENDED															
APPD by: G.FORD															
	TENSION INSULATOR STRING ARRANGEMENT													513946	
	SUSPENSION INSULATOR STRING ARRANGEMENT													514043	
	ASSOCIATED DRAWINGS														

NETWORK STANDARD

145 NEWCASTLE RD WALLSEND,  
NSW 2287

SCALE	1:7.5
DESIGNED	PHILLIP JONES
DRAWN	PATRICIA RIOS
CHECKED	PHILLIP JONES
APPROVED	GLENN FORD
DATE	20/02/18
PROJECT NUMBER	STD
PROJTRAK NUMBER	-

STANDARD CONSTRUCTION			
66kV & 132kV LONGROD INSULATOR			
DUAL PHASE CONDUCTOR			
STRING ARRANGEMENT			
SIZE	DRAWING No	SHEET	AMD
A2	244700	1	3