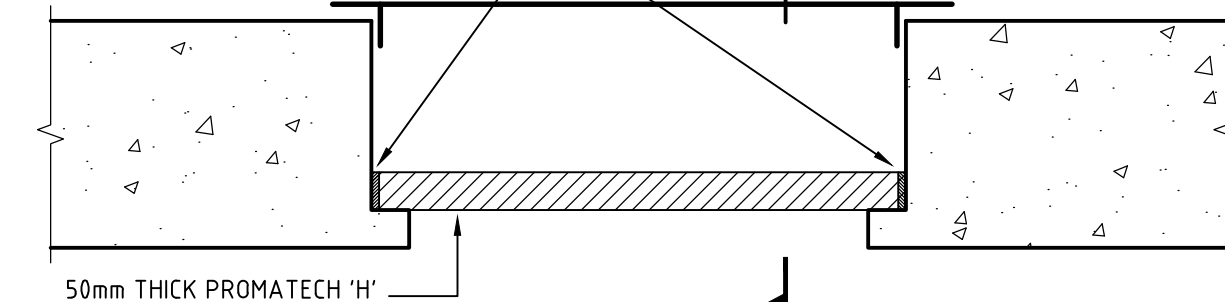


TRENCH COVER
REFER TO DRAWING No. 183125

SEAL GAPS WITH PROMASEAL
ACRYLIC INTUMESCENT SEALANT



TYPICAL SECTION

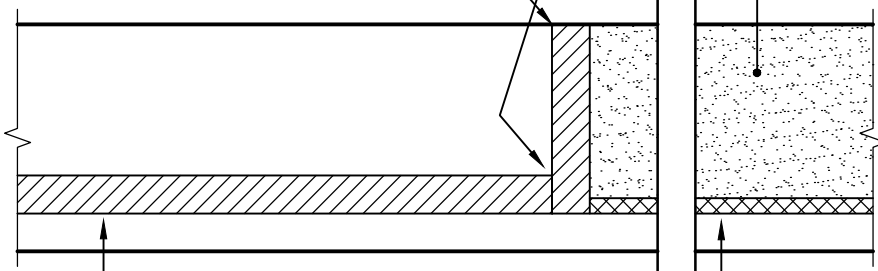
SCALE 1:10

PLACE ALUMINUM TRENCH COVERS.
NOT SHOWN FOR CLARITY

TRANSITION
FROM MORTAR
TO PROMATECH

SEAL GAPS WITH PROMASEAL
ACRYLIC INTUMESCENT SEALANT

MORTAR SECTION



50mm THICK
PROMATECH 'H'

SECTION
SCALE 1:10

CABLE

FC SHEETING

NS 171 DETAIL - APPENDIX B

- NOTE: 1. MORTAR SEAL TO NS171
2. USE PROMASEAL ACRYLIC INTUMESCENT SEALANT FOR GAPS IN PROMATECH SECTION
3. NOT TO BE USED OUTDOORS.
4. NOT TO BE USED FOR WHERE CABLES PASS THROUGH THE SLOT.

CAD DRAWING DO NOT MANUALLY AMEND	AMENDMENTS
0. ISSUED FOR CONSTRUCTION JA 07-04-09	
1. NEW AUSGRID BORDER & LOGO ADDED. RLAALAA 17-10-2013 APPROVED T.LAMPARD	
REFERENCE DRAWING ADDED J.ABDILLA 17-04-2018 APPROVED J.MESSIH	



SCALE	AS SHOWN
DESIGNED	JEREMY WOODBRIDGE
DRAWN	JOSEPH ABDILLA
CHECKED	JEREMY WOODBRIDGE
APPROVED	KATINA GALLEN
DATE	APRIL 2009

**FLOOR SEAL SPARE
SWITCHGEAR CABLE SLOT
SEAL**

PROJECT No.	
PRJTRK No.	
Sheet	1
A4	184895
	2