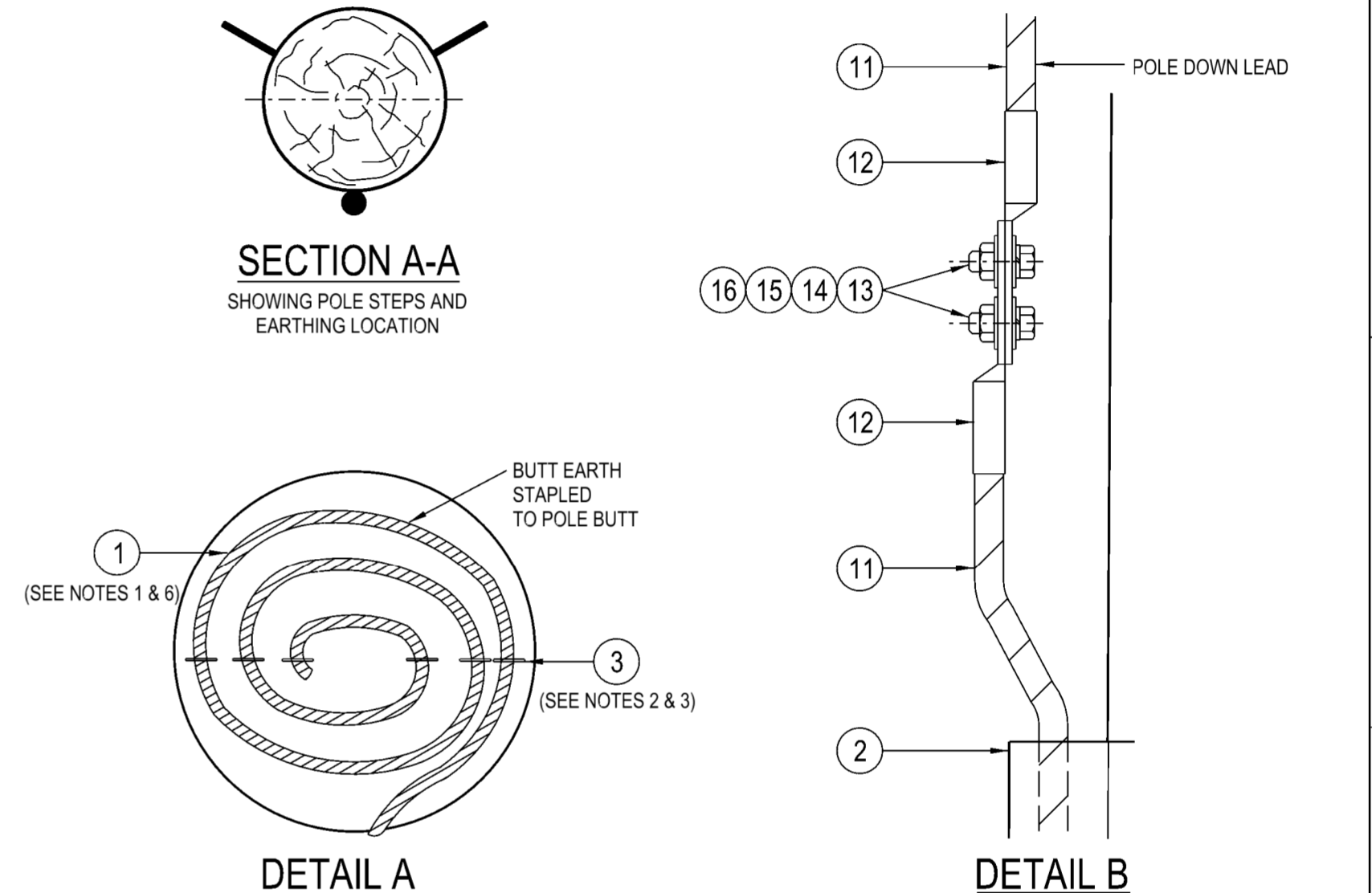


- NOTES :**
1. USE BARE 70mm² HARD DRAWN COPPER CONDUCTOR IN ALL BELOW GROUND LOCATIONS UNLESS AN ALTERNATIVE CONDUCTOR IS SPECIFIED BY NETWORK EARTHING.
 2. STAPLING OF THE EARTH TO THE BUTT OF THE POLE IS TO BE COMPLETED BEFORE ERECTION.
 3. STAPLES/SADDLES SECURING THE EARTHING CONDUCTOR ARE TO BE SPACED AT NOT MORE THAN 600mm.
 4. QUANTITIES SHOWN IN THE TABLE ARE FOR 2 POLES ONLY. FOR THREE POLE STRUCTURES, ADD HALF TO THE QUANTITIES SHOWN.
 5. THE DISTANCE BETWEEN POLES IS SPECIFIED ON THE STANDARD CONSTRUCTION DRAWING OR SHOWN ON THE PROJECT DESIGN DRAWINGS.
 6. AFTER ERECTION AND PRIOR TO THE CONNECTION OF ANY OVERHEAD EARTHWIRE, THE RESISTANCE OF THE BUTT EARTH SHALL BE MEASURED BY TESTING BETWEEN THE BUTT EARTH AND A REMOTE EARTH ELECTRODE. IF THE REQUIRED EARTH RESISTANCE, SPECIFIED BY NETWORK EARTHING, IS NOT ACHIEVED, ADDITIONAL EARTHING IS TO BE INSTALLED AS SHOWN UNTIL THE SPECIFIED VALUE OF RESISTANCE IS OBTAINED.
 7. WHERE PRACTICAL, ADDITIONAL EARTHING CONDUCTOR IS TO BE INSTALLED PARALLEL AND UNDER THE OVERHEAD LINES.



ITEM	DESCRIPTION	DRG. No	STOCK CODE	STD ARR.	WITH ADD'L EARTHING	QTY
16	NUT - M10, HEX., STAINLESS STEEL	515467	H39401	4	4	4
15	WASHER - SPRING, M10, STAINLESS STEEL	518082	50120	4	4	4
14	WASHER - FLAT, M10, STAINLESS STEEL	518081	49411	8	8	8
13	SCREW - SET, M10x25mm, HEX., STAINLESS STEEL	515467	44966	4	4	4
12	LUG - COMPRESSION, BI-METALLIC, 2 x M10 HOLES (TO SUIT MERCURY CONDUCTOR)	514053	H117275	4	4	4
11	CONDUCTOR - MERCURY, 7/4.5AAC		H13433	A/R	A/R	
10	CONNECTOR - COMPRESSION, PROFILE 'C', COPPER (70mm ² TO 70mm ² CONDUCTOR)		177942	4	8	
9	LINK - COMPRESSION, BI-METALLIC (MERCURY (7/4.5AAC) TO 19/2.14 (70mm ²) Cu CABLE)		187132	2	2	
8	SADDLE - CABLE, 12.7mm, HEAVY DUTY, DOUBLE SIDED, GALVANISED (SEE NOTE 3)		176494	A/R	A/R	
7	COUPLER - EARTH ELECTRODE, TO SUIT Ø15mm ROD		H31649	-	A/R	
6	ELECTRODE - DRIVEN EARTH, Ø15x1800mm		H31631	-	A/R	
5	CONNECTOR - COMPRESSION, PROFILE '6', COPPER (70mm ² CONDUCTOR TO Ø15mm ROD)		H31699	-	A/R	
4	SCREW - #12x45mm, SELF DRILLING		175567	A/R	A/R	
3	STAPLE - FENCING, 4.0x40mm, GALVANISED STEEL (SEE NOTES 2 & 3)		51060	A/R	A/R	
2	GUARD - EARTH, COVER, 3m, BLACK, PVC		157552	2	2	
1	CONDUCTOR - 19/2.14 (70mm ²) COPPER, EARTHING, HARD DRAWN (SEE NOTES 1 & 6)		176140	A/R	A/R	

DIMENSIONS ARE IN MILLIMETRES UNLESS STATED OTHERWISE. DO NOT SCALE

CAD DRAWING DO NOT MANUALLY AMEND A M E N D M E N T S DWN: P.R. CHKD: P.J. APPD: G.F. DATE: 25/09/2024 ITEMS 8 & 9 AMENDED IN MATERIAL LIST.	DWN: P.R. CHKD: P.J. APPD: G.F. DATE: 25/09/2024 DETAIL B ADDED.	1 8 1 8	2 8 2 8	3 8 3 8	4 8 4 8	5 8 5 8	6 8 6 8	7 8 7 8	8 8 8 8
--	--	------------------	------------------	------------------	------------------	------------------	------------------	------------------	------------------

TIMBER POLE STRUCTURE EARTHING ARRANGEMENT TYPE SE-M5

ASSOCIATED DRAWINGS

508786

145 NEWCASTLE RD WALLSEND,
NSW 2287

NETWORK STANDARD

SCALE: N.T.S.

DESIGNED: -

DRAWN: PETER SAUNDERS

CHECKED: P.A.S

APPROVED: I.NICHOLS

DATE: 11/03/1994

PROJECT NUMBER: STD

PROJTRAK NUMBER: -

STANDARD CONSTRUCTION

MULTIPLE TIMBER POLE STRUCTURE

EARTHING ARRANGEMENT

SIZE: A2

DRAWING No: 520225

SHEET: 1

AMD: 8